

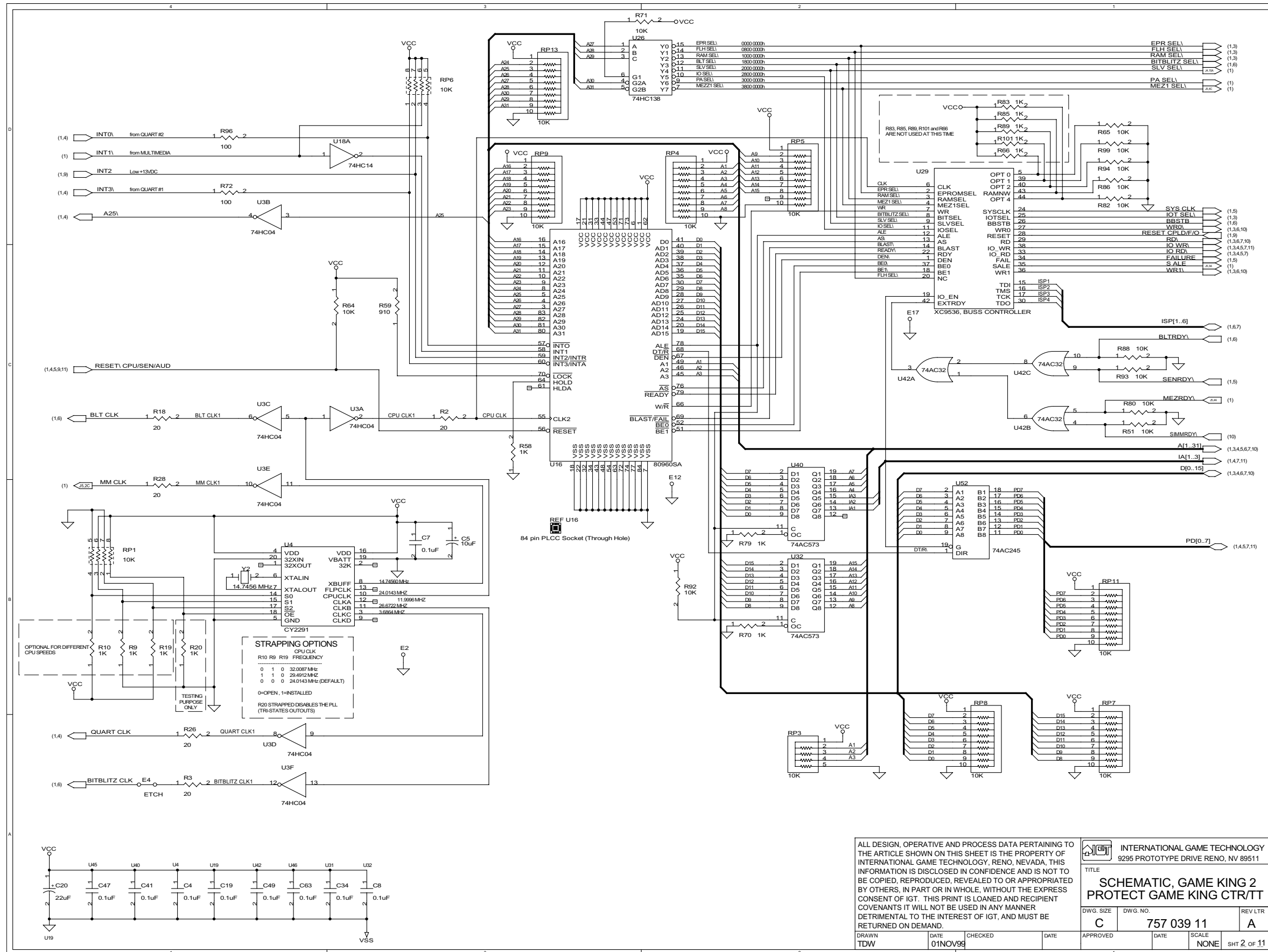
ALL DESIGN, OPERATIVE AND PROCESS DATA PERTAINING TO THE ARTICLE SHOWN ON THIS SHEET IS THE PROPERTY OF INTERNATIONAL GAME TECHNOLOGY, RENO, NEVADA. THIS INFORMATION IS DISCLOSED IN CONFIDENCE AND IS NOT TO BE COPIED, REPRODUCED, REVEALED TO OR APPROPRIATED BY OTHERS, IN PART OR IN WHOLE, WITHOUT THE EXPRESS CONSENT OF IGT. THIS PRINT IS LOANED AND RECIPIENT COVENANTS IT WILL NOT BE USED IN ANY MANNER DETRIMENTAL TO THE INTEREST OF IGT, AND MUST BE RETURNED ON DEMAND.

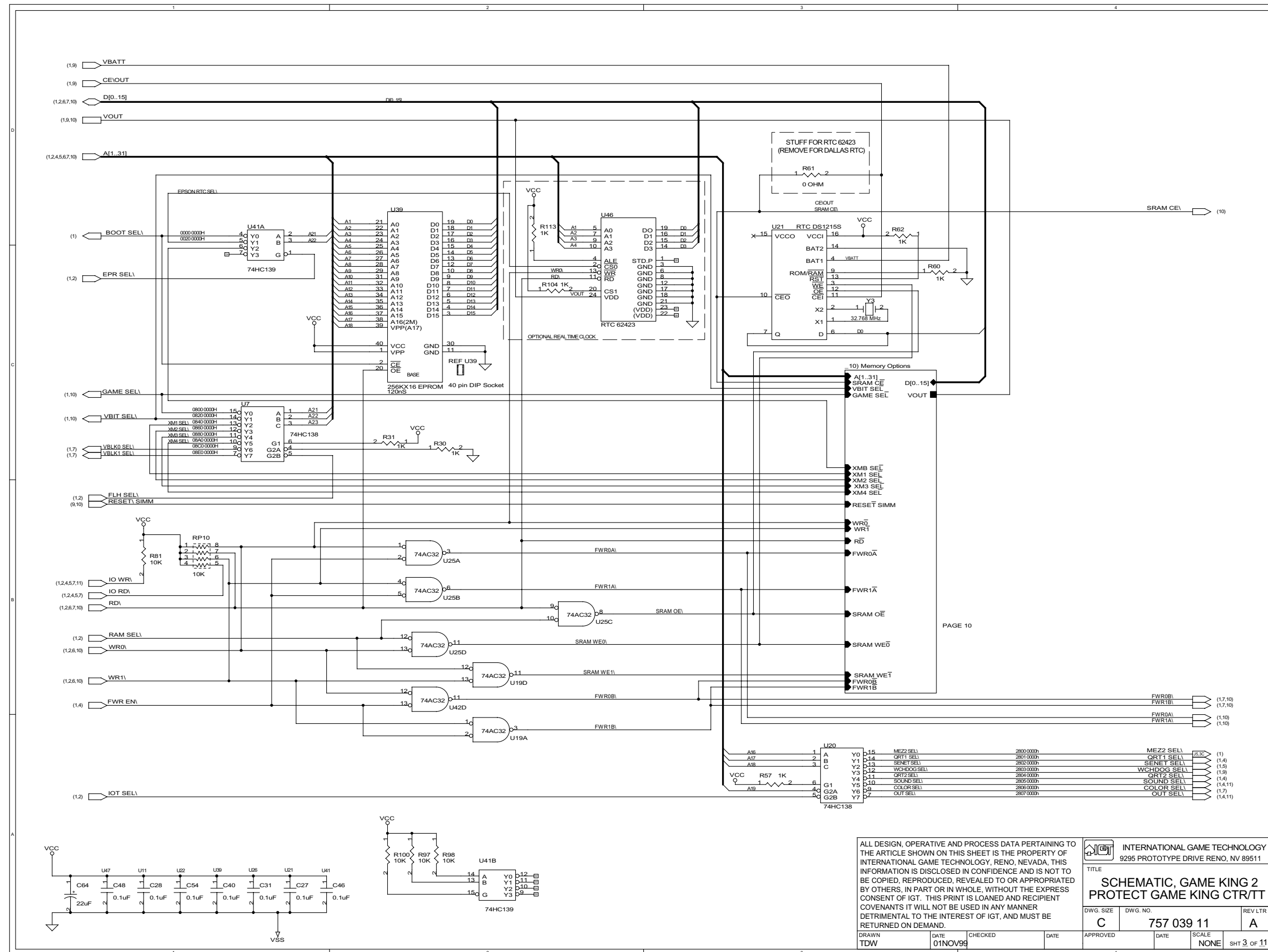
INTERNATIONAL GAME TECHNOLOGY  
9295 PROTOTYPE DRIVE RENO, NV 89511

TITLE  
**SCHEMATIC, GAME KING 2 PROTECT GAME KING CTR/TT**

DWG. SIZE C DWG. NO. 757 039 11 REV LTR A

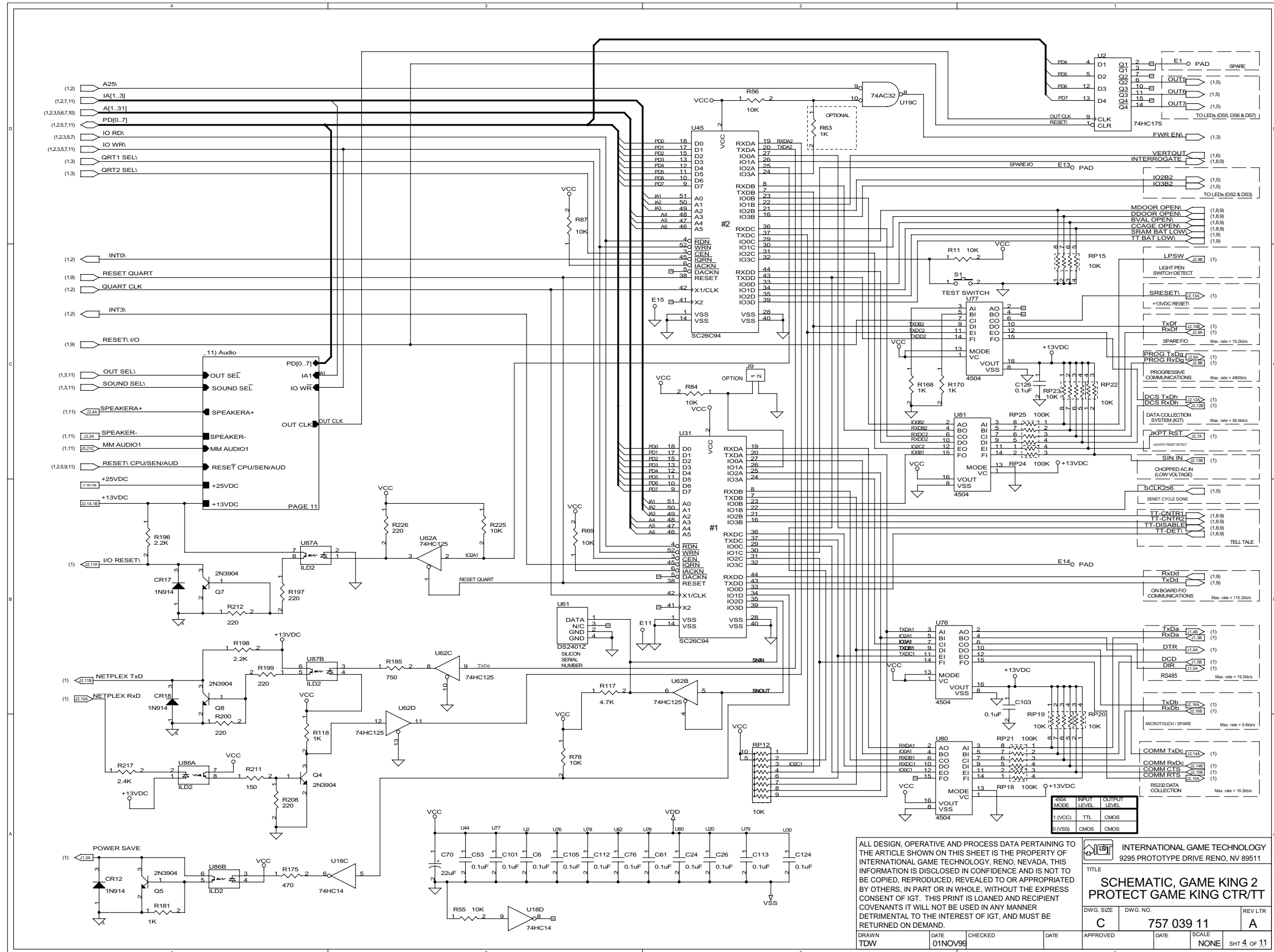
DRAWN TDW DATE 01NOV99 CHECKED DATE APPROVED DATE SCALE NONE SHT 1 OF 11

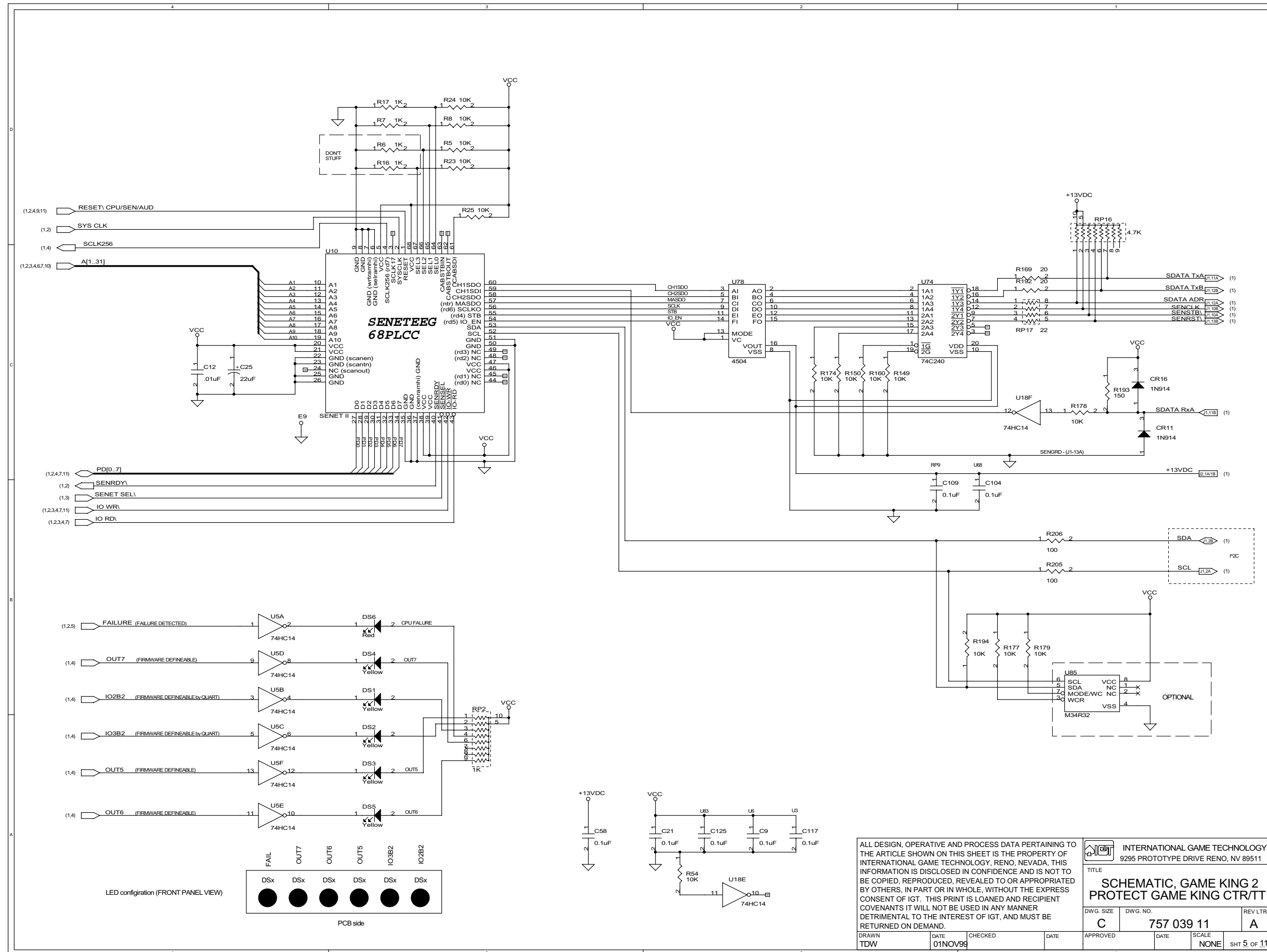




ALL DESIGN, OPERATIVE AND PROCESS DATA PERTAINING TO THE ARTICLE SHOWN ON THIS SHEET IS THE PROPERTY OF INTERNATIONAL GAME TECHNOLOGY, RENO, NEVADA, THIS INFORMATION IS DISCLOSED IN CONFIDENCE AND IS NOT TO BE COPIED, REPRODUCED, REVEALED TO OR APPROPRIATED BY OTHERS, IN PART OR IN WHOLE, WITHOUT THE EXPRESS CONSENT OF IGT. THIS PRINT IS LOANED AND RECIPIENT COVENANTS IT WILL NOT BE USED IN ANY MANNER DETRIMENTAL TO THE INTEREST OF IGT, AND MUST BE RETURNED ON DEMAND.

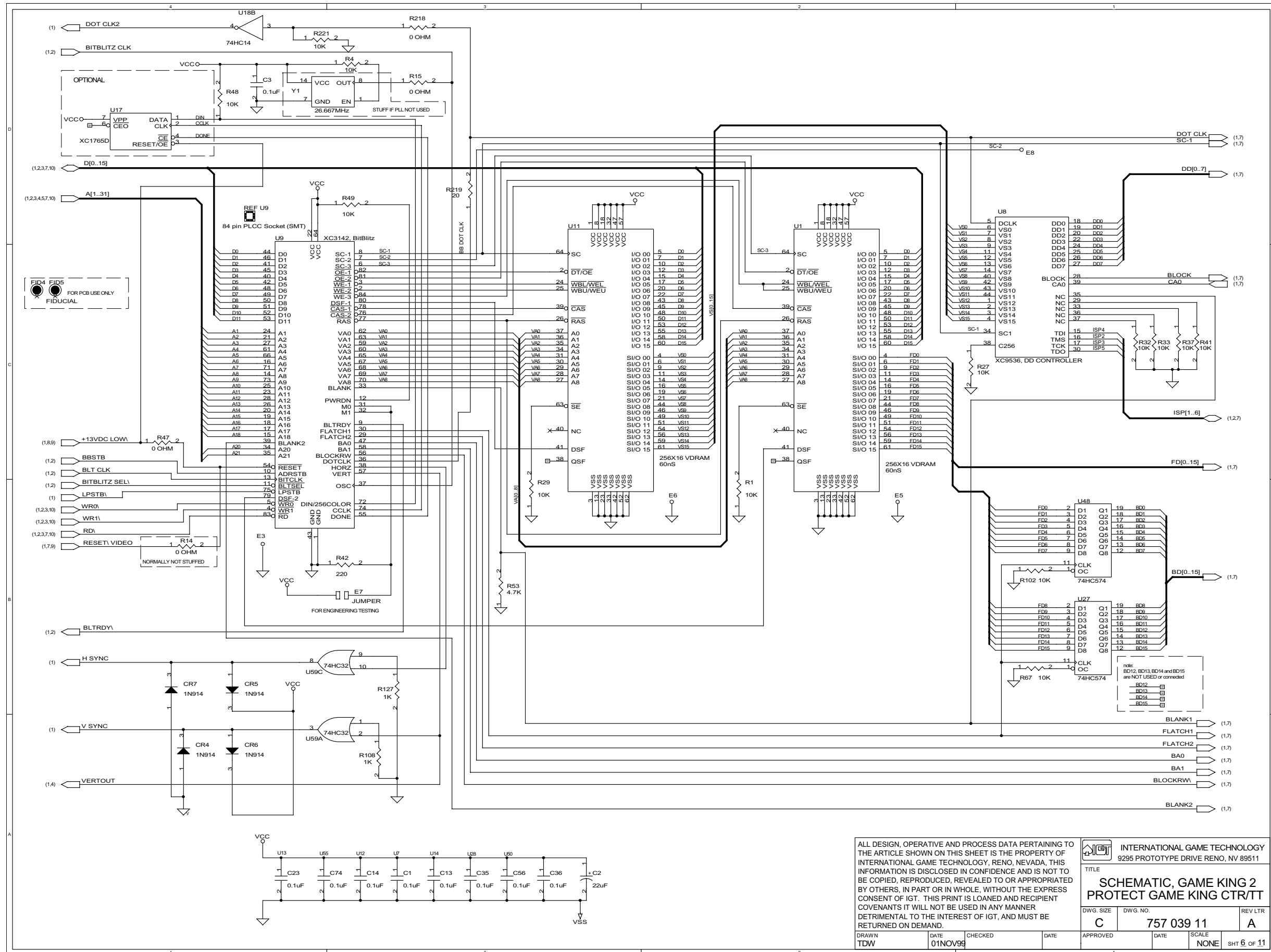
INTERNATIONAL GAME TECHNOLOGY 9295 PROTOTYPE DRIVE RENO, NV 89511	
TITLE <b>SCHEMATIC, GAME KING 2 PROTECT GAME KING CTR/TT</b>	
DWG. SIZE <b>C</b>	DWG. NO. <b>757 039 11</b>
REV LTR <b>A</b>	SCALE <b>NONE</b>
DRAWN <b>TDW</b>	DATE <b>01NOV99</b>
CHECKED	DATE
APPROVED	DATE
SHT 3 OF 11	





ALL DESIGN, OPERATIVE AND PROCESS DATA PERTAINING TO THE ARTICLE SHOWN ON THIS SHEET IS THE PROPERTY OF INTERNATIONAL GAME TECHNOLOGY, RENO, NEVADA, THIS INFORMATION IS DISCLOSED IN CONFIDENCE AND IS NOT TO BE COPIED, REPRODUCED, REVEALED TO OR APPROPRIATED BY OTHERS, IN PART OR IN WHOLE, WITHOUT THE EXPRESS CONSENT OF IGT. THIS PRINT IS LOANED AND RECIPIENT COVENANTS IT WILL NOT BE USED IN ANY MANNER DETRIMENTAL TO THE INTEREST OF IGT, AND MUST BE RETURNED ON DEMAND.

INTERNATIONAL GAME TECHNOLOGY 9295 PROTOTYPE DRIVE RENO, NV 89511	
TITLE <b>SCHEMATIC, GAME KING 2                  PROTECT GAME KING CTR/TT</b>	
DWG. SIZE <b>C</b>	DWG. NO. <b>757 039 11</b>
APPROVED	REV LTR <b>A</b>
DATE <b>01NOV99</b>	SCALE <b>NONE</b>
CHECKED	SHT 5 OF 11
DATE	

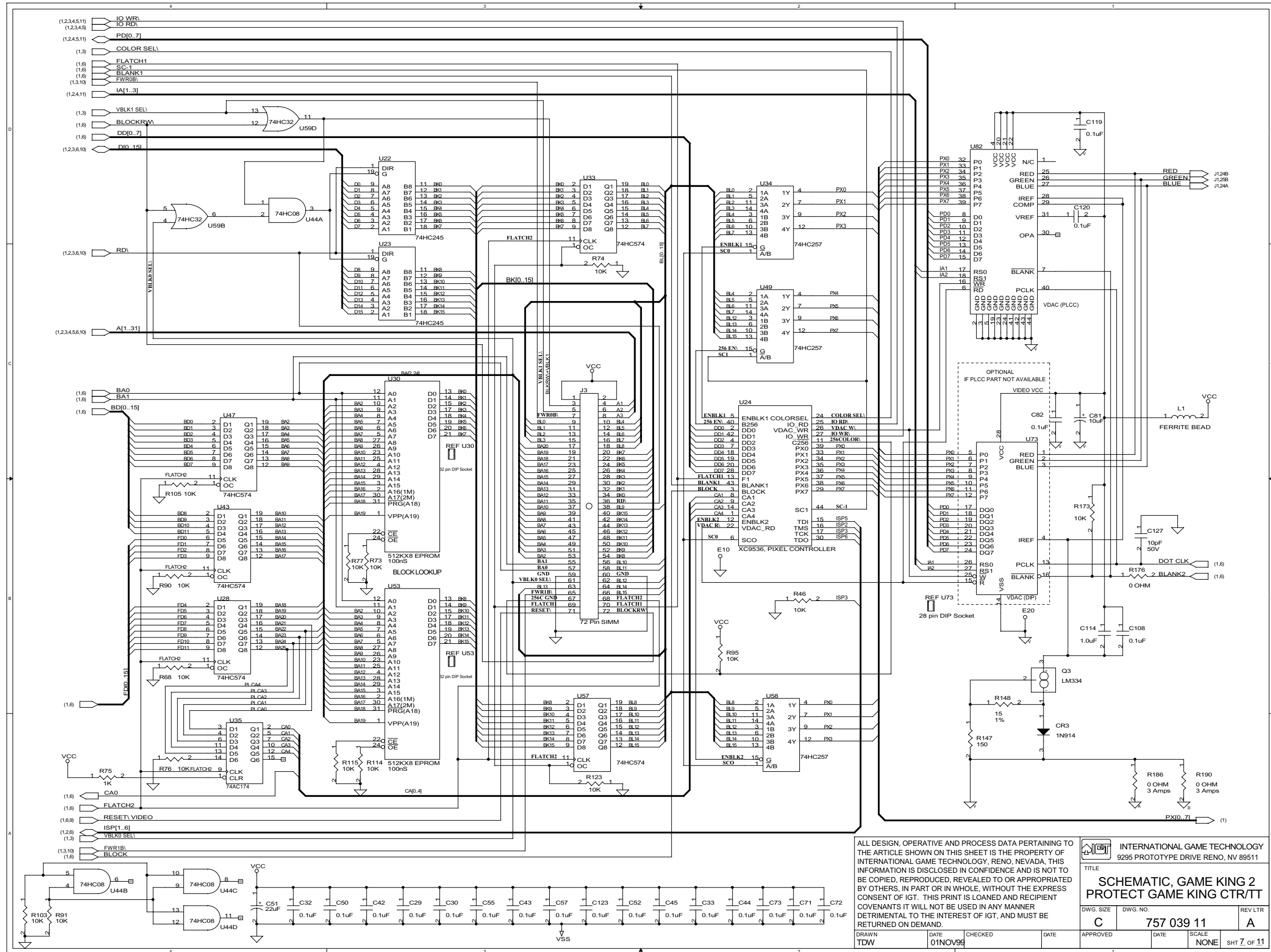


ALL DESIGN, OPERATIVE AND PROCESS DATA PERTAINING TO THE ARTICLE SHOWN ON THIS SHEET IS THE PROPERTY OF INTERNATIONAL GAME TECHNOLOGY, RENO, NEVADA, THIS INFORMATION IS DISCLOSED IN CONFIDENCE AND IS NOT TO BE COPIED, REPRODUCED, REVEALED TO OR APPROPRIATED BY OTHERS, IN PART OR IN WHOLE, WITHOUT THE EXPRESS CONSENT OF IGT. THIS PRINT IS LOANED AND RECIPIENT COVENANTS IT WILL NOT BE USED IN ANY MANNER DETRIMENTAL TO THE INTEREST OF IGT, AND MUST BE RETURNED ON DEMAND.

INTERNATIONAL GAME TECHNOLOGY  
9295 PROTOTYPE DRIVE RENO, NV 89511

TITLE  
**SCHEMATIC, GAME KING 2  
PROTECT GAME KING CTR/TT**

DWG. SIZE <b>C</b>	DWG. NO. <b>757 039 11</b>	REV LTR <b>A</b>
DRAWN <b>TDW</b>	DATE <b>01NOV99</b>	CHECKED
APPROVED	DATE	SCALE <b>NONE</b>
SHT <b>6</b> OF <b>11</b>		

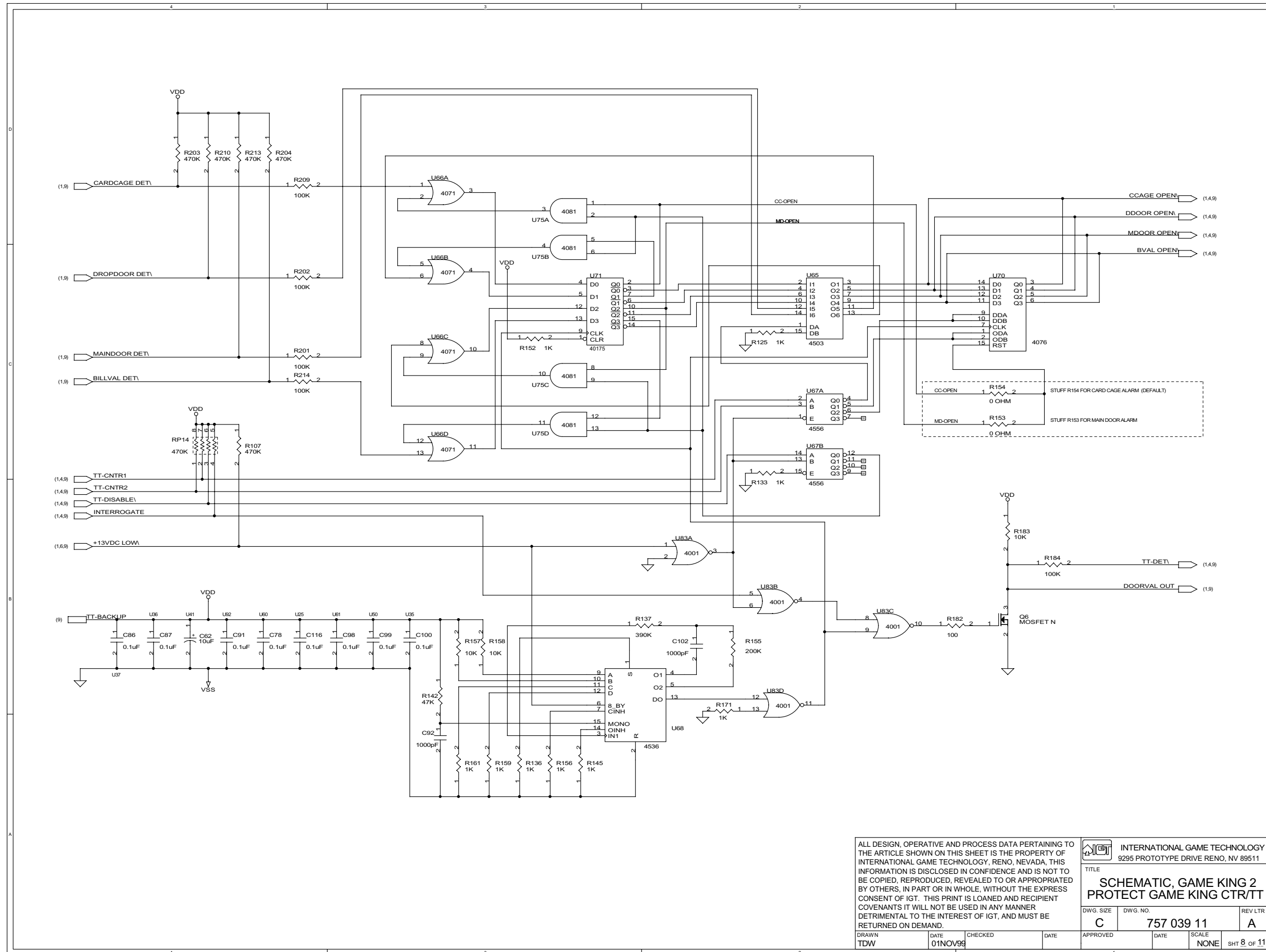


ALL DESIGN, OPERATIVE AND PROCESS DATA PERTAINING TO THE ARTICLE SHOWN ON THIS SHEET IS THE PROPERTY OF INTERNATIONAL GAME TECHNOLOGY, RENO, NEVADA. THIS INFORMATION IS DISCLOSED IN CONFIDENCE AND IS NOT TO BE COPIED, REPRODUCED, REVEALED TO OR APPROPRIATED BY OTHERS, IN PART OR IN WHOLE, WITHOUT THE EXPRESS CONSENT OF IGT. THIS PRINT IS LOANED AND RECIPIENT COVENANTS IT WILL NOT BE USED IN ANY MANNER DETRIMENTAL TO THE INTEREST OF IGT, AND MUST BE RETURNED ON DEMAND.

INTERNATIONAL GAME TECHNOLOGY  
9295 PROTOTYPE DRIVE RENO, NV 89511

TITLE  
**SCHEMATIC, GAME KING 2  
PROTECT GAME KING CTR/TT**

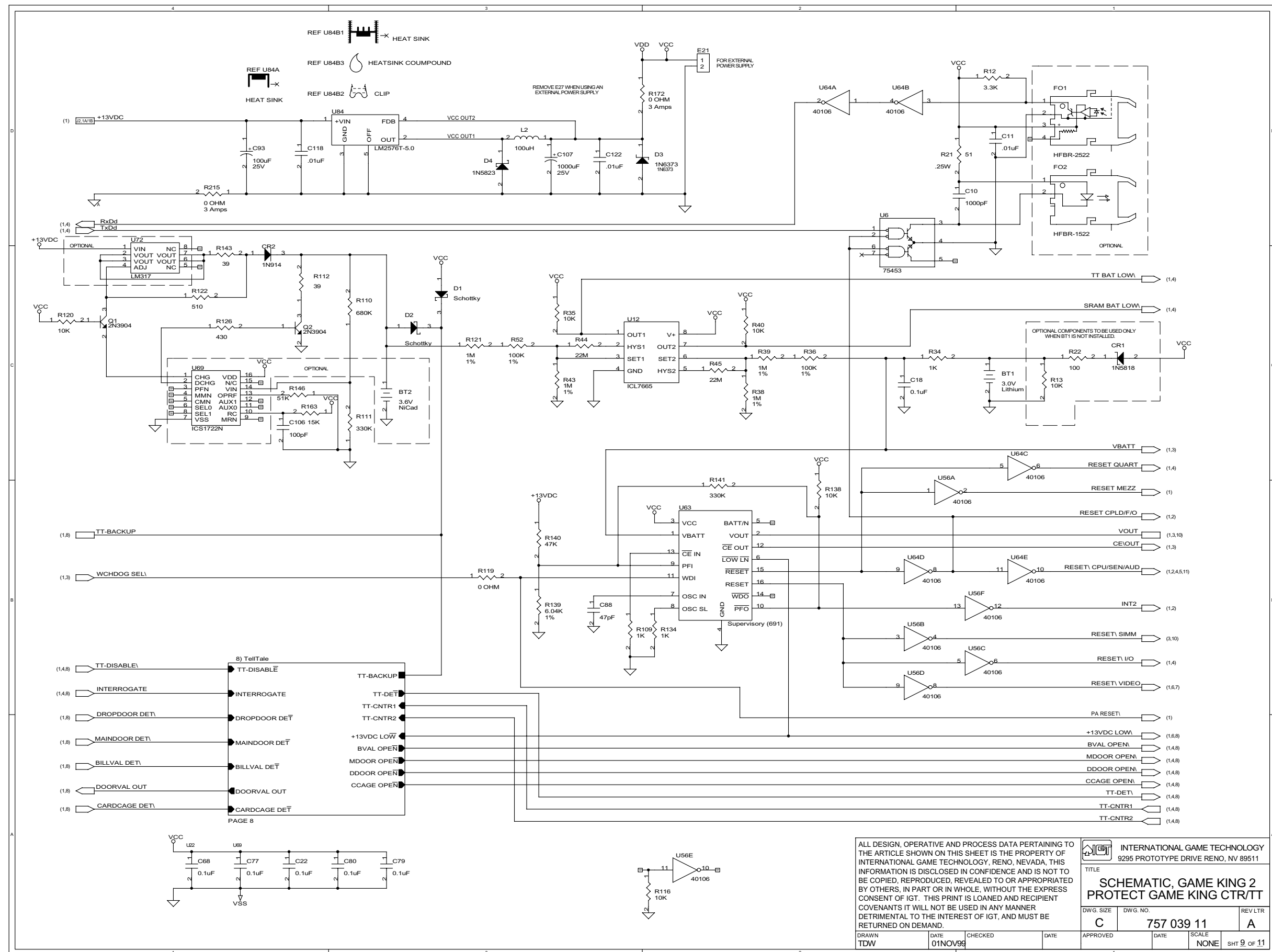
DWG. SIZE <b>C</b>	DWG. NO. <b>757 039 11</b>	REV LTR <b>A</b>
DRAWN <b>TDW</b>	DATE <b>01NOV98</b>	CHECKED
DATE	DATE	APPROVED
SCALE <b>NONE</b>	SHT <b>7</b> OF <b>11</b>	



ALL DESIGN, OPERATIVE AND PROCESS DATA PERTAINING TO THE ARTICLE SHOWN ON THIS SHEET IS THE PROPERTY OF INTERNATIONAL GAME TECHNOLOGY, RENO, NEVADA, THIS INFORMATION IS DISCLOSED IN CONFIDENCE AND IS NOT TO BE COPIED, REPRODUCED, REVEALED TO OR APPROPRIATED BY OTHERS, IN PART OR IN WHOLE, WITHOUT THE EXPRESS CONSENT OF IGT. THIS PRINT IS LOANED AND RECIPIENT COVENANTS IT WILL NOT BE USED IN ANY MANNER DETRIMENTAL TO THE INTEREST OF IGT, AND MUST BE RETURNED ON DEMAND.

INTERNATIONAL GAME TECHNOLOGY 9295 PROTOTYPE DRIVE RENO, NV 89511	
TITLE	
<b>SCHMATIC, GAME KING 2                  PROTECT GAME KING CTR/TT</b>	
DWG. SIZE	DWG. NO.
C	757 039 11
REV LTR	A
DATE	SCALE
01NOV99	NONE
SHT 8 OF 11	



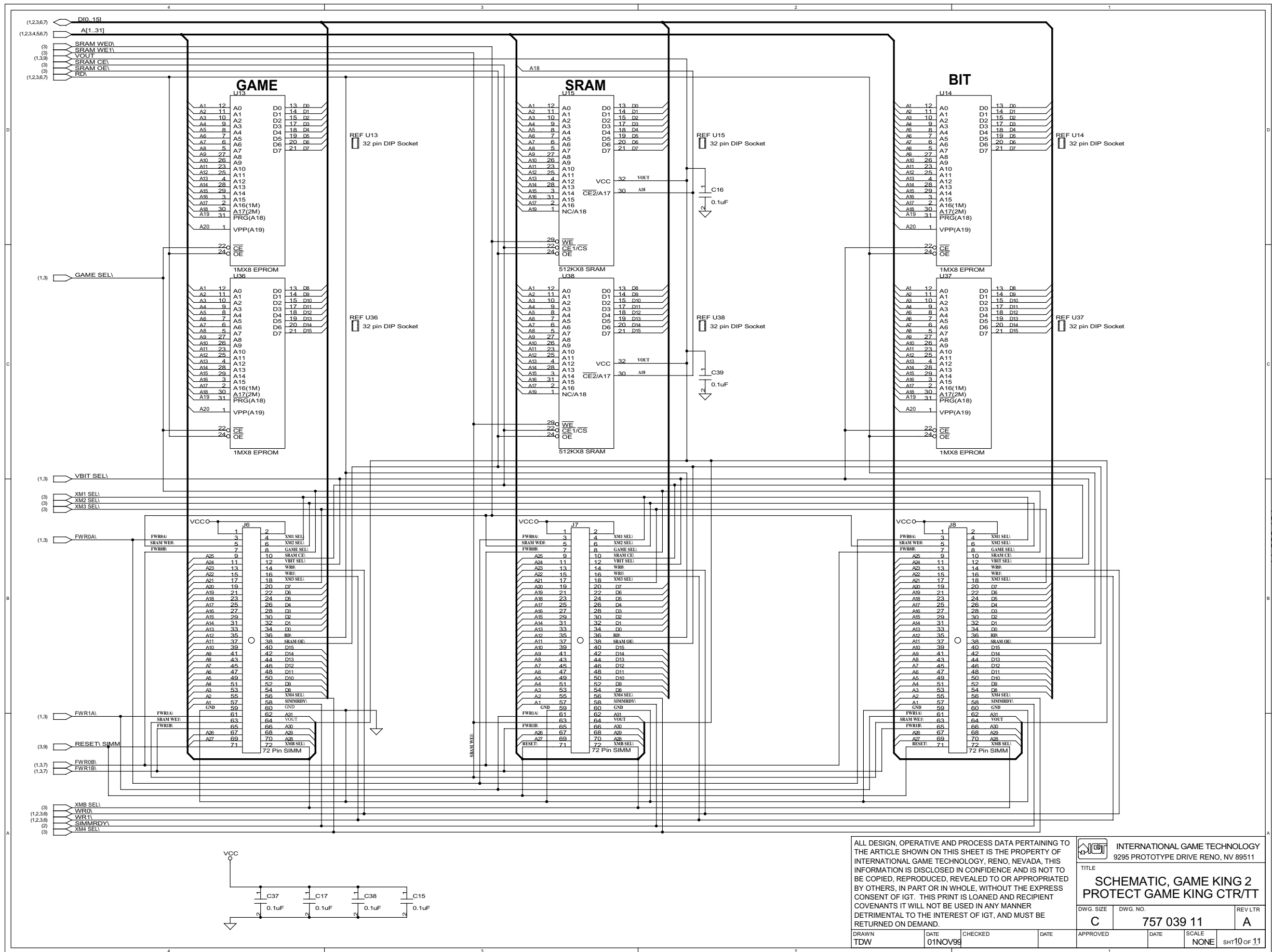


ALL DESIGN, OPERATIVE AND PROCESS DATA PERTAINING TO THE ARTICLE SHOWN ON THIS SHEET IS THE PROPERTY OF INTERNATIONAL GAME TECHNOLOGY, RENO, NEVADA. THIS INFORMATION IS DISCLOSED IN CONFIDENCE AND IS NOT TO BE COPIED, REPRODUCED, REVEALED TO OR APPROPRIATED BY OTHERS, IN PART OR IN WHOLE, WITHOUT THE EXPRESS CONSENT OF IGT. THIS PRINT IS LOANED AND RECIPIENT COVENANTS IT WILL NOT BE USED IN ANY MANNER DETRIMENTAL TO THE INTEREST OF IGT, AND MUST BE RETURNED ON DEMAND.

INTERNATIONAL GAME TECHNOLOGY  
9295 PROTOTYPE DRIVE RENO, NV 89511

TITLE  
**SCHEMATIC, GAME KING 2  
PROTECT GAME KING CTR/TT**

DWG. SIZE <b>C</b>	DWG. NO. <b>757 039 11</b>	REV LTR <b>A</b>
DRAWN TDW	DATE 01NOV99	CHECKED
APPROVED	DATE	SCALE NONE
		SHT 9 OF 11



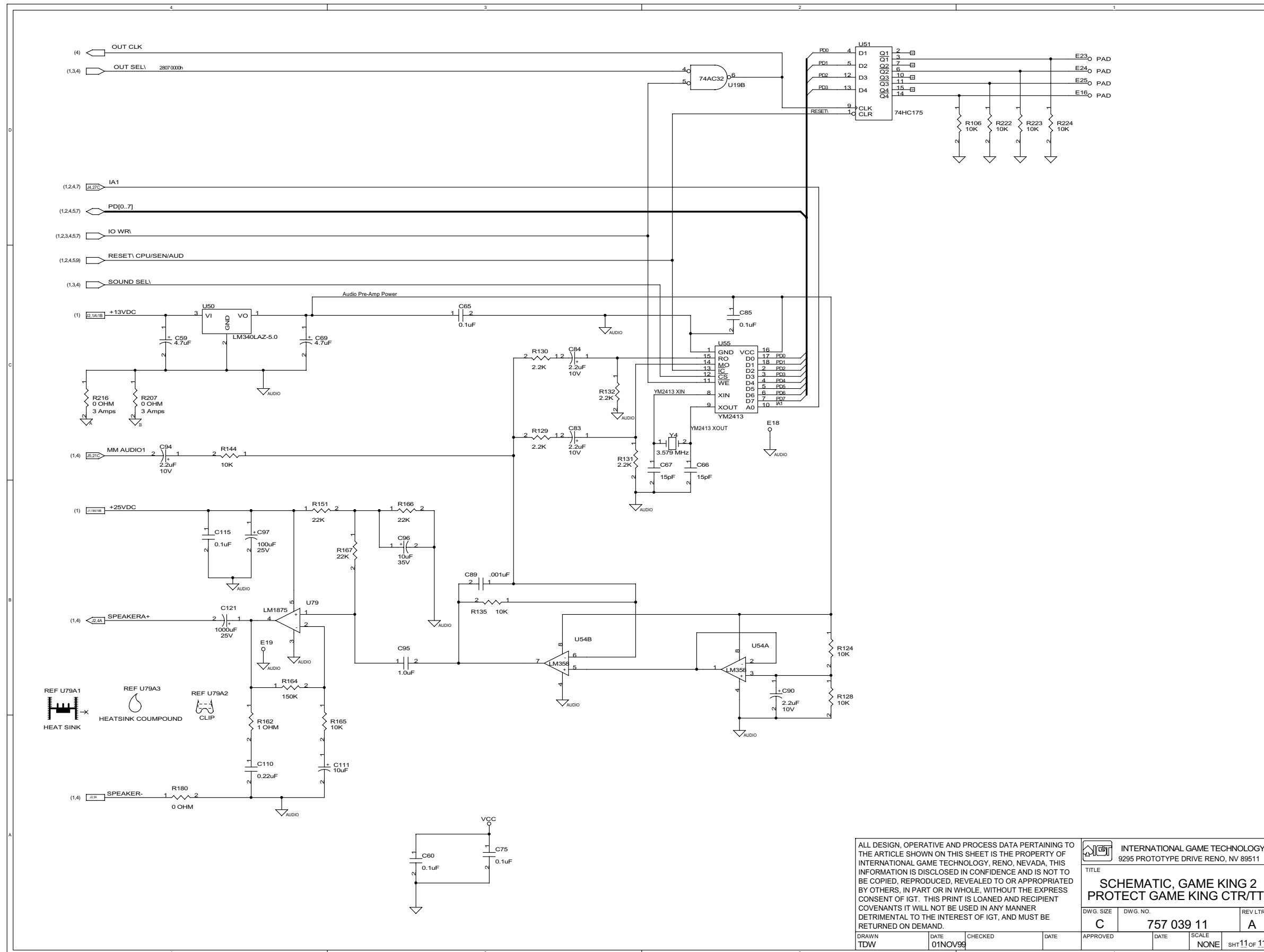
ALL DESIGN, OPERATIVE AND PROCESS DATA PERTAINING TO THE ARTICLE SHOWN ON THIS SHEET IS THE PROPERTY OF INTERNATIONAL GAME TECHNOLOGY, RENO, NEVADA. THIS INFORMATION IS DISCLOSED IN CONFIDENCE AND IS NOT TO BE COPIED, REPRODUCED, REVEALED TO OR APPROPRIATED BY OTHERS, IN PART OR IN WHOLE, WITHOUT THE EXPRESS CONSENT OF IGT. THIS PRINT IS LOANED AND RECIPIENT COVENANTS IT WILL NOT BE USED IN ANY MANNER DETRIMENTAL TO THE INTEREST OF IGT, AND MUST BE RETURNED ON DEMAND.

INTERNATIONAL GAME TECHNOLOGY  
9295 PROTOTYPE DRIVE RENO, NV 89511

TITLE  
**SCHEMATIC, GAME KING 2 PROTECT GAME KING CTR/TT**

DWG. SIZE <b>C</b>	DWG. NO. <b>757 039 11</b>	REV/LTR <b>A</b>
APPROVED	DATE	SCALE <b>NONE</b>
DATE	CHECKED	DATE
DRAWN <b>TDW</b>	DATE <b>01NOV98</b>	DATE

sh10 of 11



ALL DESIGN, OPERATIVE AND PROCESS DATA PERTAINING TO THE ARTICLE SHOWN ON THIS SHEET IS THE PROPERTY OF INTERNATIONAL GAME TECHNOLOGY, RENO, NEVADA, THIS INFORMATION IS DISCLOSED IN CONFIDENCE AND IS NOT TO BE COPIED, REPRODUCED, REVEALED TO OR APPROPRIATED BY OTHERS, IN PART OR IN WHOLE, WITHOUT THE EXPRESS CONSENT OF IGT. THIS PRINT IS LOANED AND RECIPIENT COVENANTS IT WILL NOT BE USED IN ANY MANNER DETRIMENTAL TO THE INTEREST OF IGT, AND MUST BE RETURNED ON DEMAND.

INTERNATIONAL GAME TECHNOLOGY  
9295 PROTOTYPE DRIVE RENO, NV 89511

TITLE  
**SCHEMATIC, GAME KING 2  
PROTECT GAME KING CTR/TT**

DWG. SIZE <b>C</b>	DWG. NO. <b>757 039 11</b>	REV LTR <b>A</b>
DRAWN TDW	DATE 01NOV99	CHECKED DATE
APPROVED DATE	SCALE NONE	SHT 11 of 11