

**NOTES:**  
 (UNLESS OTHERWISE SPECIFIED)  
 1) ALL SURFACE MOUNT RESISTORS EXPRESSED IN OHMS 63mW 5%  
 2) ALL CAPACITORS EXPRESSED IN MICROFARADS  
 3) ALL 14 PIN IC'S, PIN 14 IS PWR, PIN 7 IS GND.  
 ALL 16 PIN IC'S, PIN 16 IS PWR, PIN 8 IS GND.  
 ALL 20 PIN IC'S, PIN 20 IS PWR, PIN 10 IS GND.  
 ALL 32 PIN IC'S, PIN 32 IS PWR, PIN 16 IS GND.

REVISIONS				
REV	ECO	DESCRIPTION	BY/DATE	CHK/DATE
EA		PROTOTYPE RELEASE	TDW/04MAY98	
EB		RE-ROUTED R87-90 & FIXED 4001 PART & change J40	TDW/02JUN98	
A	4451	PRODUCTION RELEASE	TDW/22JULY98	

**FUNCTIONALITY FOR DIFFERENT ADDRESSES**  
 (When a Bx is zero, it's LED will light)

STRAPPING B3 B2 B1 B0	ADDRESS	J41 pin	NET	FUNCTION	IO
B3 B2 B1 B0 1 0 1 0	28020028H	1C	IN0	HOLD1	INPUTS
		3C	IN1	HOLD2	
		5C	IN2	HOLD3	
		7C	IN3	HOLD4	
		9C	IN4	HOLD5	
		11C	IN5	CHANGE	
		13C	IN6	DEAL	
	2802002AH	15C	IN7	CASH OUT	
		17C	IN8	BET MAX	
		19C	IN9	BET ONE	
		21C	IN10	COIN IN 1	
		23C	IN11	COIN IN 2	
		25C	IN12	COIN IN 3	
	28020068H	27C	IN13	COIN IN 4	
		29C	IN14	COIN IN 5	
31C		IN15	COIN IN 6		
2802006AH		2C	OUT0	HOLD 1 LIGHT	OUTPUTS
		4C	OUT1	HOLD 2 LIGHT	
		6C	OUT2	HOLD 3 LIGHT	
	8C	OUT3	HOLD 4 LIGHT		
	10C	OUT4	HOLD 5 LIGHT		
	12C	OUT5	CHANGE LIGHT		
	14C	OUT6	DEAL LIGHT		
B3 B2 B1 B0 1 0 1 1	2802002CH	16C	OUT7	CASH OUT LIGHT	
		18C	OUT8	BET MAX LIGHT	
		20C	OUT9	BET ONE LIGHT	
		22C	OUT10	LOCK OUT SOLENOID	
		24C	OUT11	DIVERTER SOLENOID	
	2802002EH	26C	OUT12	DENOM LAMP	
		28C	OUT13	INSERT COIN	
		30C	OUT14	COIN ACCEPTED	
		32C	OUT15	GAME OVER	
		2802006CH	1C	IN0	DOOR ID 0
	3C		IN1	DOOR ID 1	
	5C		IN2	DOOR ID 2	
	7C		IN3	DOOR ID 3	
	9C		IN4	SERV REQ	
	11C		IN5	DOUBLE UP	
13C	IN6		DIVERTER DET 1		
2802006EH	15C	IN7	DIVERTER DET 2		
	17C	IN8	PLAY 1 COIN		
	19C	IN9	PLAY 2 COINS		
	21C	IN10	PLAY 3 COINS		
	23C	IN11	PLAY 4 COINS		
	25C	IN12	PLAY 5 COINS		
	27C	IN13	UNUSED		
	29C	IN14	UNUSED		
2802006EH	31C	IN15	UNUSED		
	2C	OUT0	FEATURE 1 LIGHT	OUTPUTS	
	4C	OUT1	FEATURE 2 LIGHT		
	6C	OUT2	FEATURE 3 LIGHT		
	8C	OUT3	FEATURE 4 LIGHT		
	10C	OUT4	SERV REQ LIGHT		
	12C	OUT5	DOUBLE UP LIGHT		
	14C	OUT6	DIVERTER 2		
16C	OUT7	DIVERTER 3			
2802006EH	18C	OUT8	PAYLINE 1 LAMP		
	20C	OUT9	PAYLINE 2 LAMP		
	22C	OUT10	PAYLINE 3 LAMP		
	24C	OUT11	PAYLINE 4 LAMP		
	26C	OUT12	PAYLINE 5 LAMP		
	28C	OUT13	PAYLINE 6 LAMP		
	30C	OUT14	PAYLINE 7 LAMP		
	32C	OUT15	PAYLINE 8 LAMP		

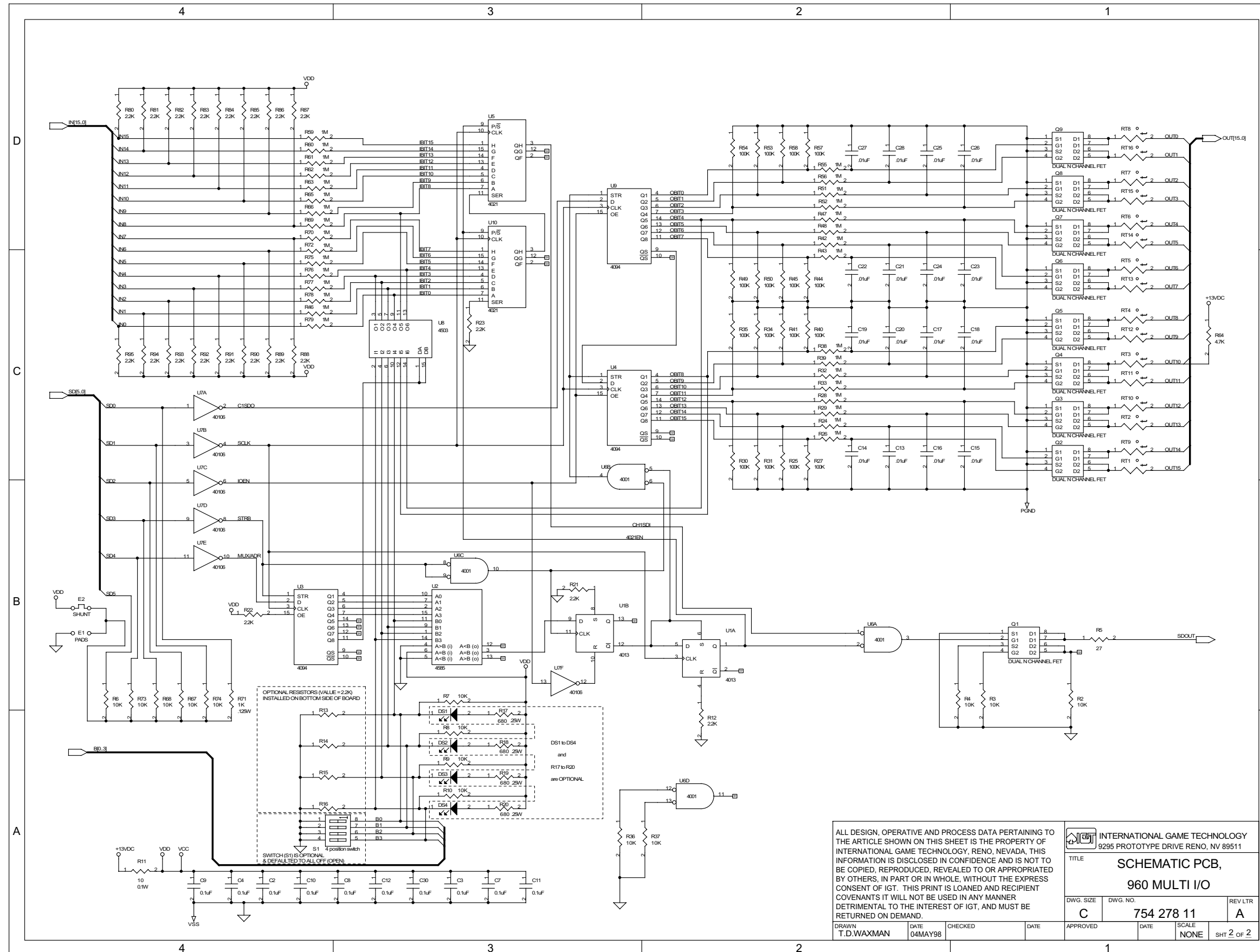
ALL DESIGN, OPERATIVE AND PROCESS DATA PERTAINING TO THE ARTICLE SHOWN ON THIS SHEET IS THE PROPERTY OF INTERNATIONAL GAME TECHNOLOGY, RENO, NEVADA. THIS INFORMATION IS DISCLOSED IN CONFIDENCE AND IS NOT TO BE COPIED, REPRODUCED, REVEALED TO OR APPROPRIATED BY OTHERS, IN PART OR IN WHOLE, WITHOUT THE EXPRESS CONSENT OF IGT. THIS PRINT IS LOANED AND RECIPIENT COVENANTS IT WILL NOT BE USED IN ANY MANNER DETRIMENTAL TO THE INTEREST OF IGT, AND MUST BE RETURNED ON DEMAND.

INTERNATIONAL GAME TECHNOLOGY  
 9295 PROTOTYPE DRIVE RENO, NV 89511

TITLE  
**SCHEMATIC PCB,**  
**960 MULTI I/O**

DWG. SIZE: **C** DWG. NO.: **754 278 11** REV LTR: **A**

DRAWN: T.D.WAXMAN DATE: 04MAY98 CHECKED: DATE: APPROVED: DATE: SCALE: NONE SHT 1 OF 2



ALL DESIGN, OPERATIVE AND PROCESS DATA PERTAINING TO THE ARTICLE SHOWN ON THIS SHEET IS THE PROPERTY OF INTERNATIONAL GAME TECHNOLOGY, RENO, NEVADA. THIS INFORMATION IS DISCLOSED IN CONFIDENCE AND IS NOT TO BE COPIED, REPRODUCED, REVEALED TO OR APPROPRIATED BY OTHERS, IN PART OR IN WHOLE, WITHOUT THE EXPRESS CONSENT OF IGT. THIS PRINT IS LOANED AND RECIPROCAL COVENANTS IT WILL NOT BE USED IN ANY MANNER DETRIMENTAL TO THE INTEREST OF IGT, AND MUST BE RETURNED ON DEMAND.

INTERNATIONAL GAME TECHNOLOGY  
9295 PROTOTYPE DRIVE RENO, NV 89511

TITLE  
**SCHEMATIC PCB,  
960 MULTI I/O**

DWG. SIZE <b>C</b>	DWG. NO. <b>754 278 11</b>	REV LTR <b>A</b>
DRAWN <b>T.D.WAXMAN</b>	DATE <b>04MAY98</b>	CHECKED <b>DATE</b>
APPROVED <b>DATE</b>	SCALE <b>NONE</b>	SHT <b>2</b> OF <b>2</b>