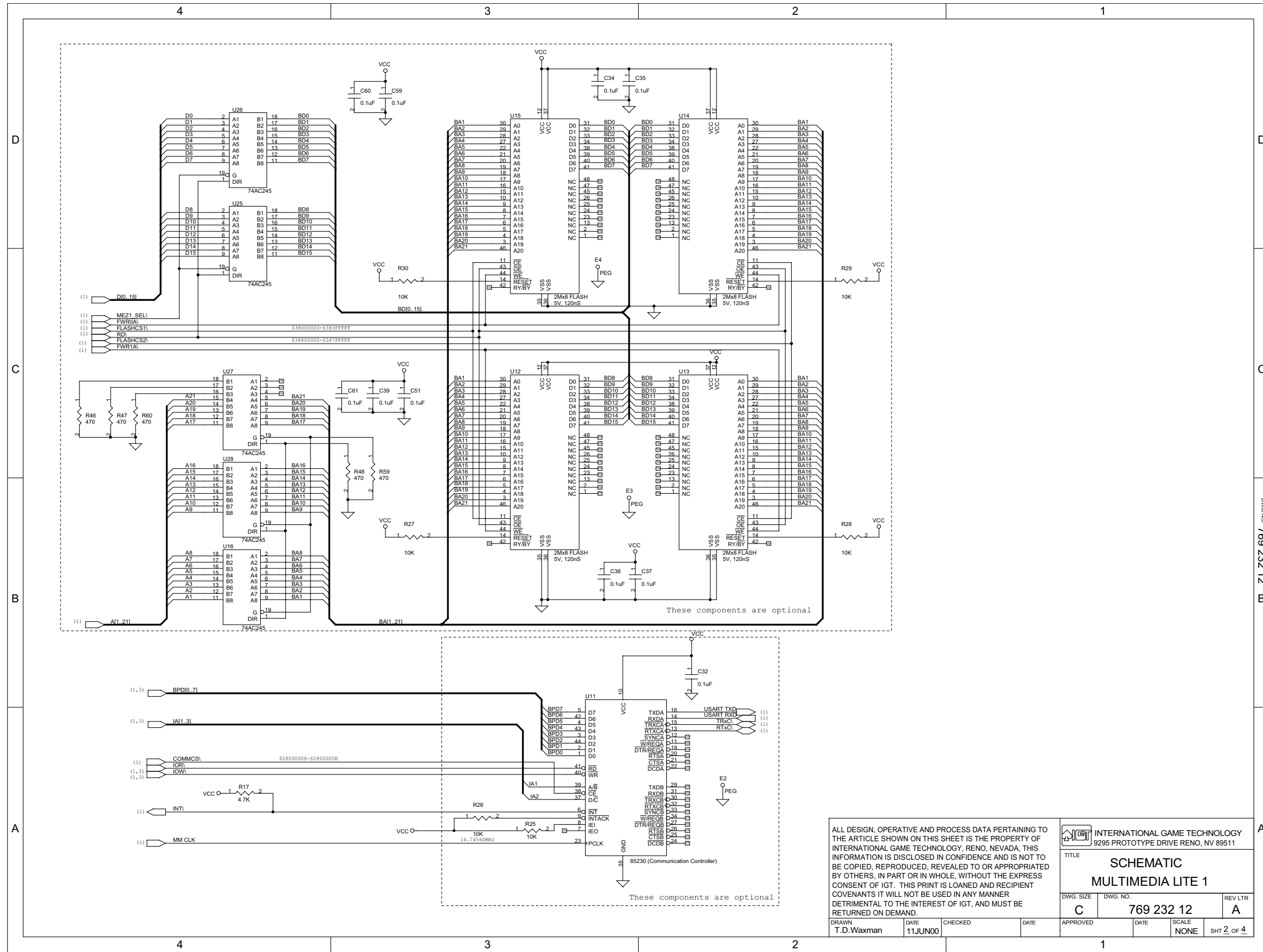


ALL DESIGN, OPERATIVE AND PROCESS DATA PERTAINING TO THE ARTICLE SHOWN ON THIS SHEET IS THE PROPERTY OF INTERNATIONAL GAME TECHNOLOGY, RENO, NEVADA, THIS INFORMATION IS DISCLOSED IN CONFIDENCE AND IS NOT TO BE COPIED, REPRODUCED, REVEALED TO OR APPROPRIATED BY OTHERS, IN PART OR IN WHOLE, WITHOUT THE EXPRESS CONSENT OF IGT. THIS PRINT IS LOANED AND RECIPIENT COVENANTS IT WILL NOT BE USED IN ANY MANNER DETRIMENTAL TO THE INTEREST OF IGT, AND MUST BE RETURNED ON DEMAND.

INTERNATIONAL GAME TECHNOLOGY
9295 PROTOTYPE DRIVE RENO, NV 89511

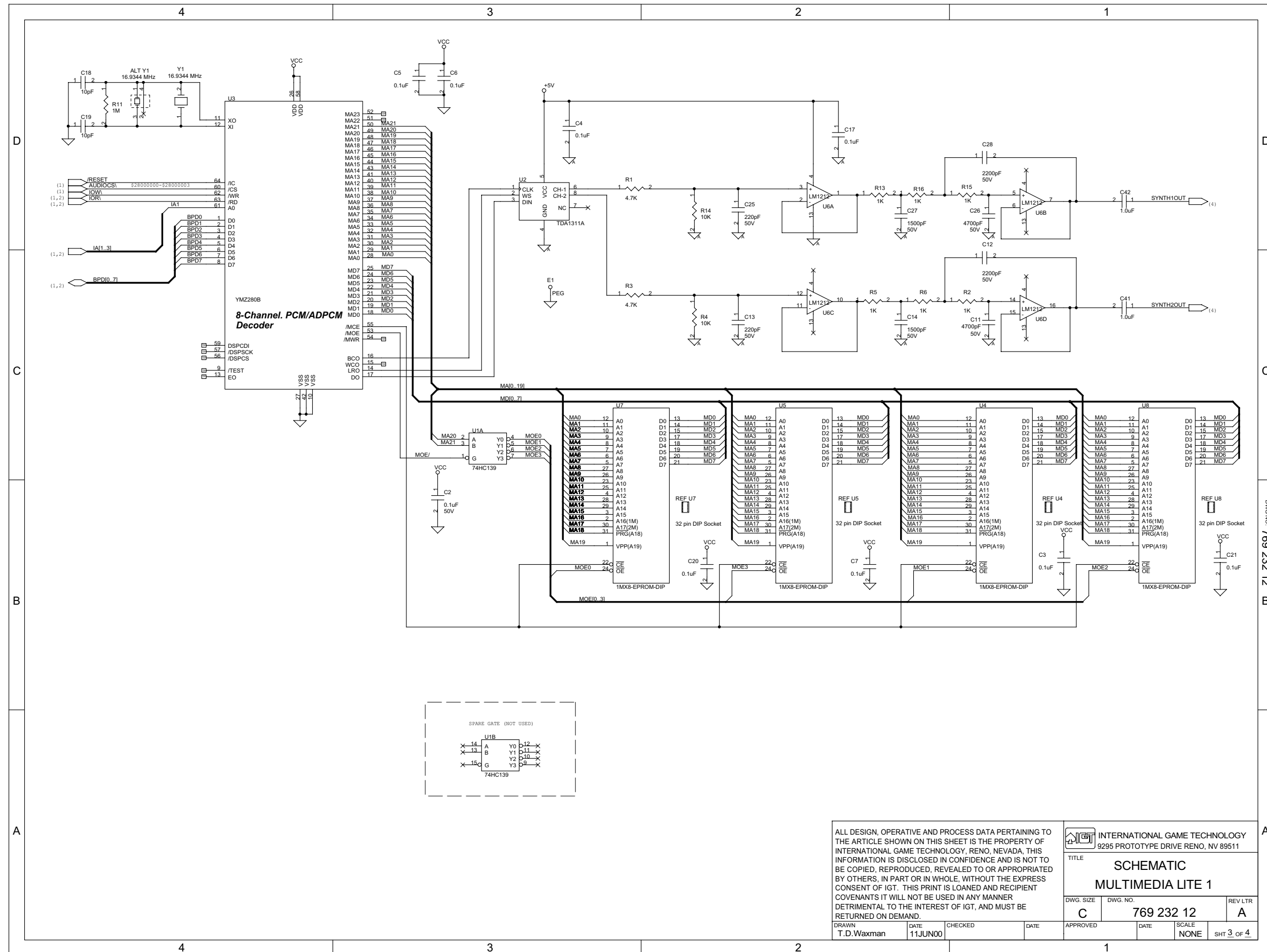
TITLE
SCHEMATIC
MULTIMEDIA LITE 1

DWG. SIZE C	DWG. NO. 769 232 12	REV LTR A
DRAWN T.D.Waxman	DATE 11JUN00	CHECKED
APPROVED	DATE	SCALE NONE
SHT 1 OF 4		



ALL DESIGN, OPERATIVE AND PROCESS DATA PERTAINING TO THE ARTICLE SHOWN ON THIS SHEET IS THE PROPERTY OF INTERNATIONAL GAME TECHNOLOGY, RENO, NEVADA. THIS INFORMATION IS DISCLOSED IN CONFIDENCE AND IS NOT TO BE COPIED, REPRODUCED, REVEALED OR APPROPRIATED BY OTHERS, IN PART OR IN WHOLE, WITHOUT THE EXPRESS CONSENT OF IGT. THIS PRINT IS LOANED AND RECIPIENT COVENANTS IT WILL NOT BE USED IN ANY MANNER DETRIMENTAL TO THE INTEREST OF IGT, AND MUST BE RETURNED ON DEMAND.

INTERNATIONAL GAME TECHNOLOGY 9295 PROTOTYPE DRIVE RENO, NV 89511	
TITLE SCHEMATIC MULTIMEDIA LITE 1	
DWG. SIZE C	DWG. NO. 769 232 12
REV LTR A	DATE 11JUN00
APPROVED	SCALE NONE
DRAWN T.D.Waxman	DATE 11JUN00
CHECKED	SCALE NONE
DATE	SHT 2 OF 4

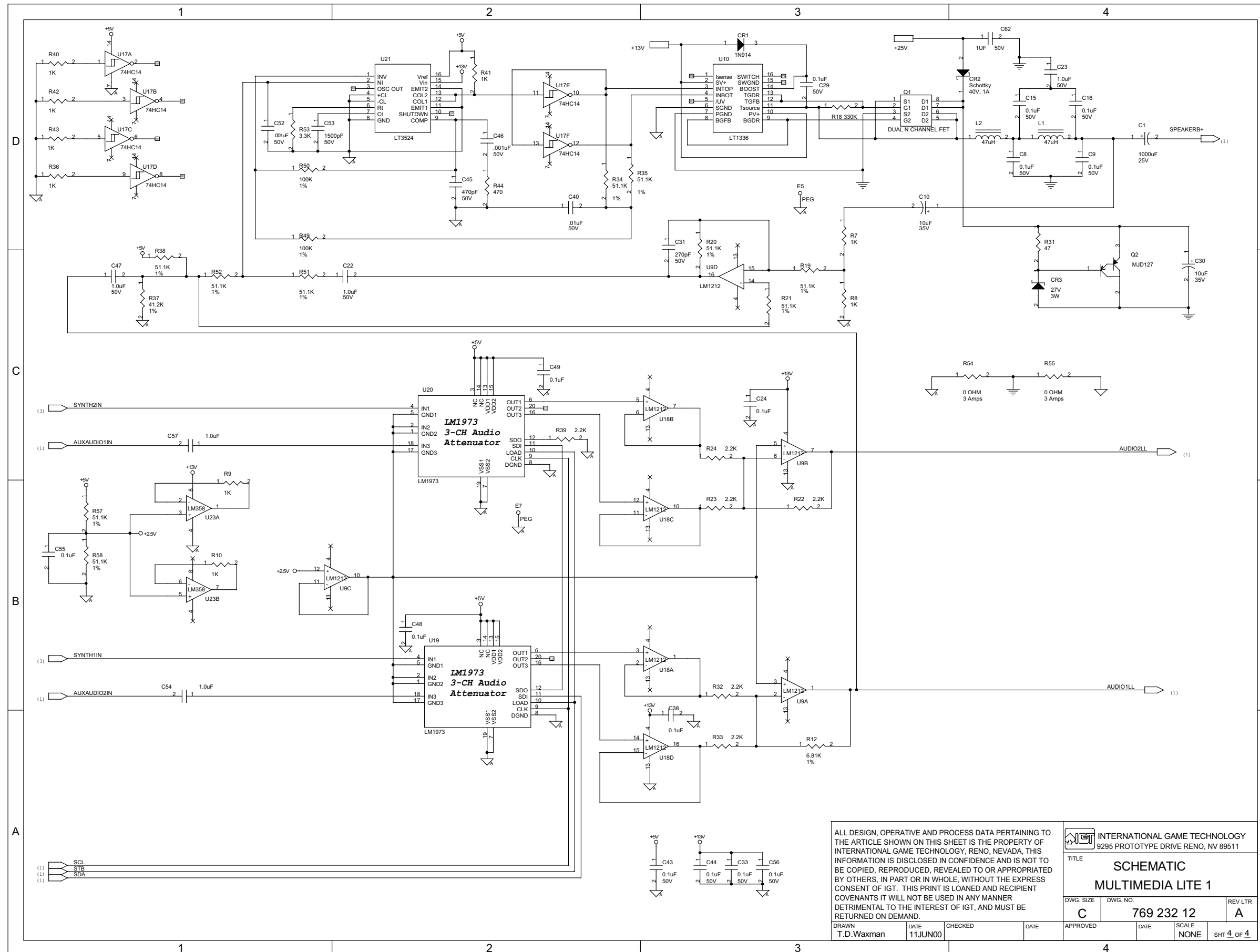


ALL DESIGN, OPERATIVE AND PROCESS DATA PERTAINING TO THE ARTICLE SHOWN ON THIS SHEET IS THE PROPERTY OF INTERNATIONAL GAME TECHNOLOGY, RENO, NEVADA. THIS INFORMATION IS DISCLOSED IN CONFIDENCE AND IS NOT TO BE COPIED, REPRODUCED, REVEALED OR APPROPRIATED BY OTHERS, IN PART OR IN WHOLE, WITHOUT THE EXPRESS CONSENT OF IGT. THIS PRINT IS LOANED AND RECIPIENT COVENANTS IT WILL NOT BE USED IN ANY MANNER DETRIMENTAL TO THE INTEREST OF IGT, AND MUST BE RETURNED ON DEMAND.

INTERNATIONAL GAME TECHNOLOGY
9295 PROTOTYPE DRIVE RENO, NV 89511

TITLE
SCHEMATIC
MULTIMEDIA LITE 1

DWG. SIZE C	DWG. NO. 769 232 12	REV LTR A
DRAWN T.D.Waxman	DATE 11JUN00	CHECKED
APPROVED	DATE	SCALE NONE
SHT 3 OF 4		



ALL DESIGN, OPERATIVE AND PROCESS DATA PERTAINING TO THE ARTICLE SHOWN ON THIS SHEET IS THE PROPERTY OF INTERNATIONAL GAME TECHNOLOGY, RENO, NEVADA. THIS INFORMATION IS DISCLOSED IN CONFIDENCE AND IS NOT TO BE COPIED, REPRODUCED, REVEALED TO OR APPROPRIATED BY OTHERS, IN PART OR IN WHOLE, WITHOUT THE EXPRESS CONSENT OF IGT. THIS PRINT IS LOANED AND RECIPIENT COVENANTS IT WILL NOT BE USED IN ANY MANNER DETRIMENTAL TO THE INTEREST OF IGT, AND MUST BE RETURNED ON DEMAND.

INTERNATIONAL GAME TECHNOLOGY 9295 PROTOTYPE DRIVE RENO, NV 89511			
TITLE SCHMATIC MULTIMEDIA LITE 1			
DWG. SIZE	DWG. NO.	REV LTR	
C	769 232 12	A	
APPROVED	DATE	SCALE	SHT 4 OF 4
T.D.Waxman	11JUN00	NONE	