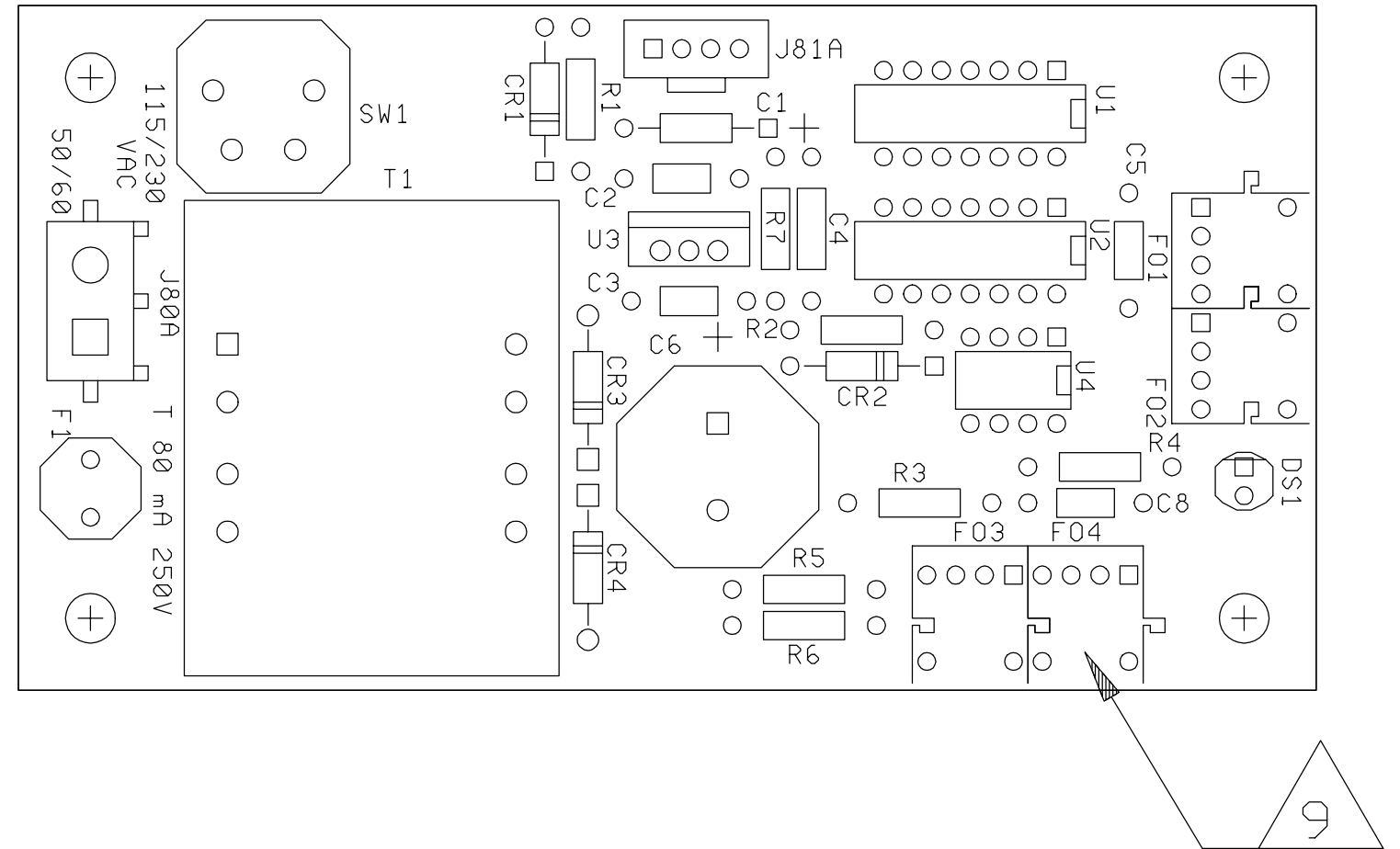


FIBER-OPTIC INTERFACE BOARD ASSEMBLY

754-216-03 REV A

Component	Description	Part Number
REF SCHEMATIC	BOARD, PC, FIBER OPTIC, INTERFACE, TX SWAP, CSA, TUV, REV B	754 216 12
REF RAW	BOARD, PC, FIBER OPTIC, INTERFACE, TX SWAP, CSA, TUV, REV A	754 216 33
REF DRAWING	BOARD, PC, FIBER OPTIC, INTERFACE, TX SWAP, CSA, TUV, REV A	754 216 53
REF SUB ASSEMBLY/LIST	BOARD, PC, FIBER OPTIC, INTERFACE, TX SWAP, CSA, TUV, REV A	754 216 43
C1	CAPACITOR, TANT, 2.2UF, 20%, 15V, AX, T/R	154 028 91
C2,3,5,8	CAPACITOR, CERAMIC, .1UF, 50V, +80-20%, AX, T/R	152 078 91
C4	CAPACITOR, CERAMIC, 1000PF, 20%, 50V, AX, T/R	152 086 91
C6	CAPACITOR, ELECTRO, RAD, 2200UF, 16V	156 044 90
CR1,2	DIODE, SW, 100V, 100MA, 1N4148	480 033 91
CR3,4	RECTIFIER, SIL, 1A, 50V, 1N4001	484 021 90
DS1	EMITTER, LED, RED, MV5753	371 002 90
F1	FUSE, SPECIAL, PCB, 80MA, 250V, TL	529 016 90
FO1	FIBER OPTIC RECEIVER, HFBR - 2522	375 016 90
FO2,3	FIBER OPTIC TRANSMITTER, HFBR - 1522	375 015 90
J80A	CONNECTOR, SOCKET, PCB, 2-PIN	211 002 90
J81A	CONNECTOR, HDR, 4-PIN, STR, SHROUD, SL	211 050 90
R1,5	RESISTOR, CF, 1K, OHM, .25W, T/R	474 023 91
R2	RESISTOR, CF, 200, OHM, .25W, T/R	474 017 91
R3	RESISTOR, CF, 51, OHM, .25W, T/R	474 096 91
R4	RESISTOR, CF, 4.7K, OHM, .25W, T/R	474 025 91
R6	RESISTOR, CF, 750, OHM, .25W, T/R	474 008 91
R7	RESISTOR, CF, 100, OHM, .25W, T/R	474 010 91
SW1	SWITCH, 2 POS, VOLTAGE, SELECT	510 143 90
T1	TRANSFORMER, 16VCT, .15A, DUAL, CSA, PCMNT	560 057 92
U1	IC, GATE, AND, QUAD, 2 IN, 74HC08	320 273 90
U2	IC, SCHMIT/TRIG, HX/INV, 74HC14	320 266 90
U3	VREG, +5.0V/1.5A, TO220, LM7805	488 012 90
U4	IC, DUAL, AND, DRIVER, 75451	320 184 90



9. INDICATED COMPONENT <F4> MAY NOT BE USED ON ALL ASSEMBLIES.