

Mechanical Parts Player's Edge-Plus Non-Imbedded Bill Acceptor



International Game Technology

Mechanical Parts: Player's Edge-Plus Non-Imbedded Bill Acceptor

Warranty

IGT warrants that its products have been manufactured in conformity with all applicable jurisdiction regulations where this machine is licensed, and that during the warranty periods specified by contract, its products will be free from defects in workmanship and material. Minor deviations from specifications or descriptions shown in IGT product literature or service manuals which do not affect the performance of the product are not considered to be defects in workmanship or materials, and are not covered by this warranty. Operation or maintenance of the product other than as specified in IGT's service manuals, and any unauthorized modifications (even if intended to correct a problem) void all warranties. IGT's sole duty hereunder is to repair, correct, or, at IGT's option, replace defective products or parts during the contract warranty period only.

Information in this document is subject to change without notice and does not represent a commitment on the part of IGT, a wholly owned subsidiary of International Game Technology. No part of this manual may be reproduced or transmitted in any form or by any means, electronic or mechanical, including photocopying and recording, for any purpose other than the purchaser's personal use without written permission of IGT.

THE WARRANTIES SET FORTH HEREIN CONSTITUTE IGT'S SOLE AND EXCLUSIVE LIABILITY FOR DEFECTIVE AND NON-CONFORMING PRODUCTS OR PARTS. ALL OTHER WARRANTIES, EXPRESS OR IMPLIED, INCLUDING BUT NOT LIMITED TO WARRANTIES OF MERCHANTABILITY AND FITNESS FOR A PARTICULAR PURPOSE, ARE HEREBY DISCLAIMED. IN NO EVENT SHALL IGT BE LIABLE FOR DIRECT, INDIRECT, INCIDENTAL OR CONSEQUENTIAL DAMAGES, INCLUDING BUT NOT LIMITED TO LOSS OF USE, REVENUE OR PROFITS. REMEDIES SET FORTH HEREIN ARE EXCLUSIVE.

WARNING!

The following servicing instructions are for use by QUALIFIED PERSONNEL ONLY. To avoid personal injury or damage to the equipment, do not perform any servicing other than that contained in this manual.

NOTICE:

The following trademarks are owned by IGT and are registered with the U.S. Patent and Trademark Office: International Game Technology; IGT; the IGT logo with spade design; Balloon Bars; Bit-Blitz; Black Cherry; Black Tie; Blackjack; Bull's Eye; Candy Bars; Casino Night; Cats 'n' Dogs; Chaos; Checkmate; Colorado Nickels; Coral Reef; Dollars Deluxe; Double Diamond; EDT and Design; Fabulous 50's; Fancy Fruits; Fourth of July; Free Kick; Go Bananas; Gold Fever; Gold Mountain; Gold Silver & Bronze; Haywire; Home Run; Hot Peppers; Jackpot Jewels; Jackpot Jungle; Joker Design; Kangaroo; Knockdown; Leap Frog; Loose DEUCES DEUCES Wild; Louisiana Louie; Louisiana Nickels; Lucky 7's; Mega Poker; Megabucks; Megakeno; Mississippi Megabucks; Mississippi Nickels; Money Storm; Nevada Nickels; One Pull Can Change Your Life; Player's Edge; Player's Edge-Plus; Pokermania; Quartermania; Quarters Deluxe; Red, White & Blue; River Gambler; Royal Flush; Satellite; Score Board; SENET; Set 4 Life; Sevens Up; Sierra Silver; Sizzling 7; Slam Dunk; SlotView; SMART System; Spin Til You Win; Strike; Super Stars; Tidal Wave; Time Warp; Touchscreen Design; Triple Bonanza; Triple Diamond; Triple Dollars; Volcano; Whirl Win; Wild Cherry; Wild Star; Winner's Choice; 8 Ball.

The following trademarks are owned by IGT and are registered with the State of Nevada: Bonus Poker; Deuces Joker Wild Poker; Double Dollars; Double Dribble; Double Mania; Doublemania; Earthquake; Fistful of Dollars; Fortune Reel; Fun Casino; Hurricane Is Wild; Jackpot Devil; Over and Under; Patriot Poker; Play Ball; Quick Draw; Quick Silver; Slotto; Super Joker; Touchdown; Triple Play; Victory; Win Place Show.

IGT also owns trademark rights to the following: IGT-Colorado Corp.; IGT-Montana, Inc.; IGT-Europe b.v.; IGT-Australia Pty. Limited; IGT-China Management; IGT-Japan K.K.; IGT-Iceland; IGT (Asia) Company Limited; IGT do Brasil, Ltda.; IGT-Argentina, S.A.; I.G.T. [New Zealand] Pty.; IGT-China; Aces\$ Bonus Poker w/Design; Beachcomber Joker Poker; Black Widow; Black Rhino; Blackout Poker; Bonus Time; Bonus Wheel w/Design; Caveman Keno; Chocolate Bars; Clerk Validation Terminal; CVT; CVT-Plus; Deuces Wild Bonus Poker w/Design; Diamond Mine; Dimes Deluxe; Double Diamond Deluxe; Double Diamond Mine; Double Hearts; Double Jackpot Haywire; Five Times Pay Design; Free Fall Poker; Fruit Falls; Game King; High Rollers Design; Hit the Top; Hurricane; iGame with Design (interactive gaming); IGS; IGT Gaming Systems; Jackpot Poker Design; Jurassic Jackpots; Keno Bucks; Keno Deluxe; LCT; Lion Fish; Local Communication Terminal; Lock & Roll; Lucky Deal Poker; Mag 7; Mega Mystery; MegaJackpots; Megaspot; Money Card Design; Mystery Bonus; Mystery Millions; NETPLEX; Nickels Deluxe; On The Prowl; Pinball; Pinball Wizard; Power Poker; Pure Pleasure; Racing 7's; Red Ball; Royal Riches; Shore Money; Silver Lava; Slot King; Slot Line; S-Plus; S-Plus Limited Series; Super 8 Race; Super Double Pays w/Design; Super Megabucks; Telltale-Plus; Temperature's Rising; Ten Times Pay w/Design; Top Dollar; Totem Pole; Triple Bonus Poker w/Design; Triple Cash Design; Triple Cat; Triple Diamond Deluxe; Triple Jackpot w/Design; Tropical Fever; Vision Series; Vision Slot; Vision Video; Wild Cherry Pie; Wild Diamonds.

© Copyright IGT, 1998. All rights reserved.

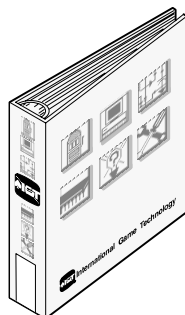
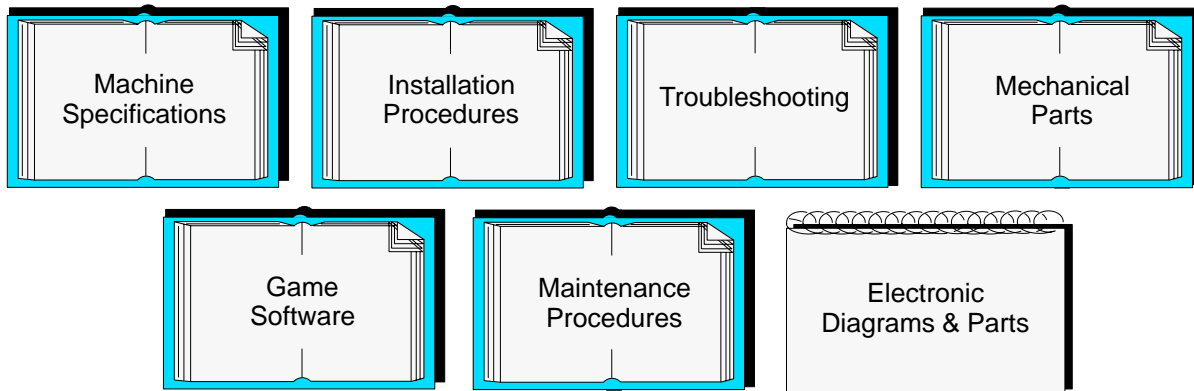
IGT
9295 Prototype Drive
Reno, Nevada 89511-8986
(702) 448-7777

About Field Service Documentation

IGT has restructured its typical service manuals to:

- Meet customer requests for separate parts and electronic manuals
- Reduce customer cost for manuals
- Allow customers to purchase the information they use most in the quantities they need

Complete Set of Documentation =
Seven Standalone Manuals



(Binders must be purchased separately.)

Packaging

Note: All manuals are 8.5" x 11" format and come shrink-wrapped and 3-hole punched to fit into a standard 3-ring binder, except the electronic diagrams & parts manual, which is 11" x 17" and spiral bound.

Related Documentation

This manual contains information related to maintenance procedures only. It should be used in conjunction with the appropriate IGT field service manuals for operations such as machine specifications, installation, game software, troubleshooting, parts and electronics.

- The *Machine Specifications* manual (p/n 821-288-01) provides environmental, electrical, dimensional, stand, and lock specifications for IGT machines. It also includes IGT seat specifications.
- The *Machine Installation Procedures* manual (p/n 821-287-01) contains overall installation instructions for all IGT machines.
- The *Game Software: Player's Edge-Plus Products* manual (p/n 821-227-00) contains program information required to select options, test, diagnose and record cumulative data for Player's Edge-Plus machines.
- The *Troubleshooting: Game Machines* manual (p/n 821-283-00) contains procedures to diagnose and rectify common problems with IGT machines.
- The *Maintenance Procedures: Player's Edge-Plus Upright Machines* manual (p/n 821-229-00) provides complete field service instructions – removal/replacement, maintenance and adjustments, disassembly and assembly and functional verification – for both optional and standard components.
- The *Electronic Diagrams and Parts: Player's Edge-Plus Non-Imbedded Bill Acceptor* manual (p/n 821-232-0x) contains wiring diagrams, board assemblies and schematics for these machines.
- The *Video Tester Operator's Manual* (p/n 821-052-00) contains information required to use the video tester (Model 9209) for testing processor boards and other machine components.

Related Videotapes

Videotapes are available in NTSC or PAL format.

- *Player's Edge-Plus Overview* (p/n 828-030-00) presents video-style gaming machines introduced by features, model types, operations and component identification.
- *Machine Installation* (p/n 828-008-00) reviews the pertinent procedures for installing machines in standard gaming or video lottery environments.
- *Player's Edge-Plus Service: Maintenance* (p/n 828-040-00) reviews procedures for basic maintenance of Player's Edge-Plus machines in standard gaming or video lottery environments.
- *Player's Edge-Plus Service: Software* (p/n 828-041-00) reviews Player's Edge-Plus game software operation and setup.
- *Player's Edge-Plus Service: Troubleshooting* (p/n 828-042-00) focuses on problem analysis and solutions addressing the most common problems encountered in casino floor environments.
- *Player's Edge-Plus Electronics Repair* (p/n 828-015-00) presents detailed board-level instruction on Player's Edge-Plus processor boards for electronic repair technicians.
- *Ceronix Monitor Repair* (p/n 828-005-00) provides technicians with board-level repair information for Ceronix monitors.
- *JCM DBV-45-SS Bill Acceptor Service and Repair* (p/n 828-009-00) presents essential operation, service and adjustment procedures on the security stacker version of the JCM model used in IGT imbedded-style bill acceptor machines and newer side-mounts.

Customer Services

24-hour Technical Information - For viewing and downloading product information, contact IGT's electronic Product Information Network in North America (computer modem required):

1-800-448-1221 (from North America)

702-448-2795 (from most international locations)

1-800-12-1100 (from Australia)

Website: <http://igtpin.intgame.com>

IGT 24-hour Customer Service Hotline - For calls relating to service or other technical assistance, call: 1-800-688-7890.

For parts information, contact:

IGT Customer Service

9295 Prototype Drive

Reno, Nevada (USA) 89511

Telephone (8 am - 4 pm PST): 702-448-0364

FAX: 702-448-0675

Table of Contents

Machine Enclosure	2
Machine Door	4
Touch Panel	6
Player Panel Switch	8
Coin-in Handling – Small Denomination	10
Coin-in Handling – Large Denomination	12
Bill Acceptor	14
Pinwheel Hopper	16
Holeywheel Hopper	18
Lower Module	20
Slot Handle Mechanism	22
Light Pen	24
Single Progressive – Type A	25
Double Progressive – Type A – .80" Display	26
Double Progressive – Type B – .56" Display	27
Seat	28

Introduction

IGT field service documentation consists of series of manuals. Each manual addresses a different aspect of field service and is designed to be used in conjunction with other standalone manuals related to specifications, maintenance, installation, game software, troubleshooting, electronics and parts. Manuals are tailored for product group or, in some cases, product models.

All manuals contain the following information to assist the reader in making the best use of IGT documentation:

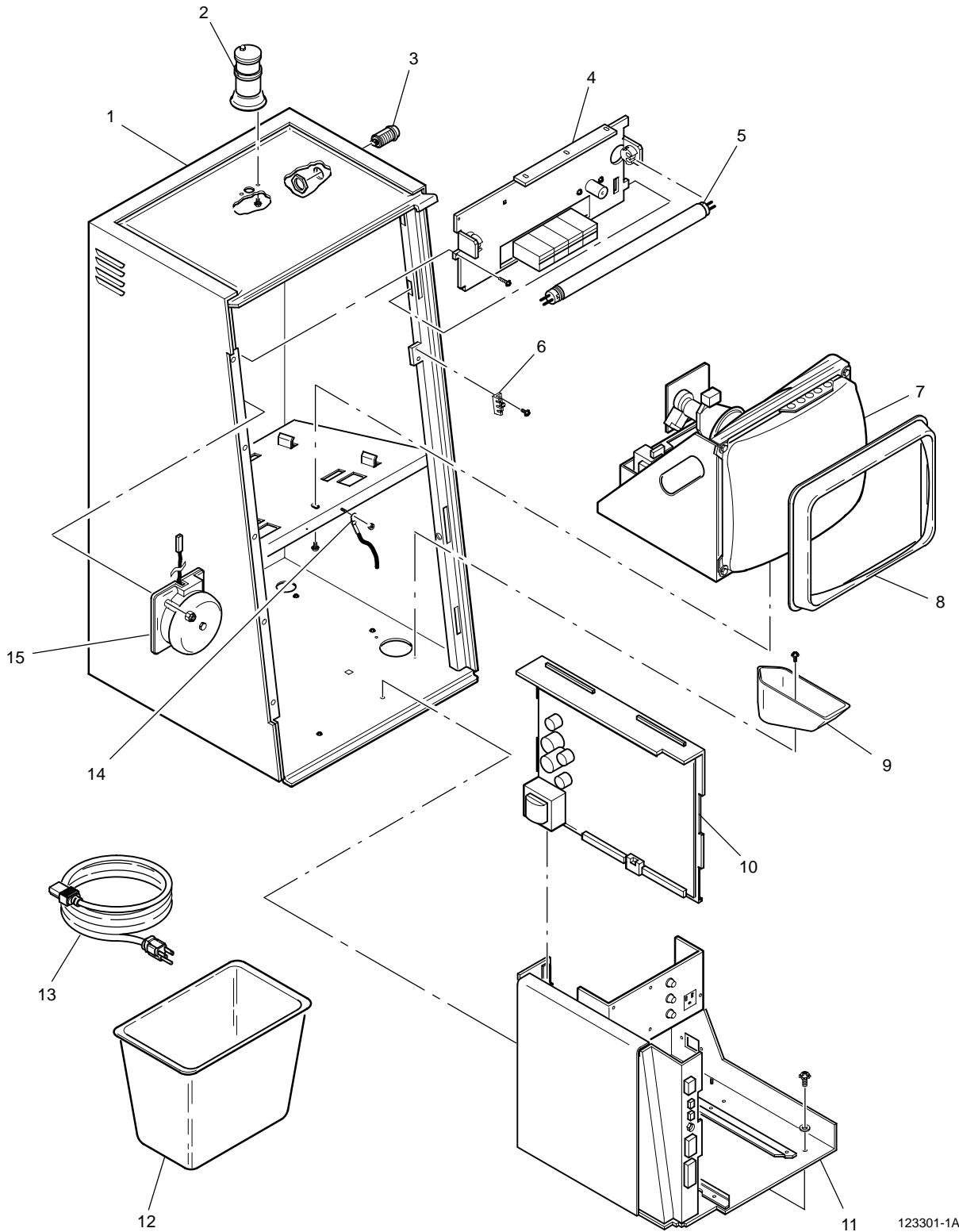
- **About Field Service Documentation** – is included at the front of each manual, and includes a graphic representation of the IGT field service manual series.
- **Related Documentation and Related Videotapes** – appear at the front of each manual and list other books and videotapes that should be used in conjunction with this manual.

MACHINE ENCLOSURE

Fig. No.	Part Number	Description	Qty.
ASSY	142 175 48	CABINET ASSEMBLY, LIGHT PEN, W/CDL	1
ASSY	142 175 40	CABINET ASSEMBLY – TOUCH PAD KENO PE+	1
1	141 047 00	CABINET – UNIVERSAL, PE+	1
2	191 155 90	CANDLE, 4 IN, RED/WHITE, CRM	1
2	191 167 90	CANDLE, 4 IN, YELLOW/WHITE, CRM	1
3	513 001 90	SWITCH, KEY, M/O, KEYED ALIKE, FAS	1
4	655 834 03	UPPER PANEL ASSEMBLY, 60 HZ PE+	1
–	419 510 94	SCREW, SEMS, PH PAN, 6-32 X 1/4	2
–	195 052 90	BALLAST, F14T 8/12, 60 HZ	1
–	197 001 90	STARTER, FS – 2, 14, 15, 20W	1
–	292 061 00	COUNTER ASSEMBLY, PE 3 METER	1
–	292 061 01	COUNTER ASSEMBLY, PE 4 METER (SHOWN)	1
–	292 061 03	COUNTER ASSEMBLY, PE 5 METER	1
–	292 061 02	COUNTER ASSEMBLY, PE 6 METER	1
5	194 013 90	LAMP, 15 IN. FLORESCENT 14W, F14T 18/CW	1
6	653 099 00	MOUNT, DOOR OPEN OPTICS	1
–	575 030 00	ENCODER, DOOR OPEN EMITTER	1
7	699 171 00	MONITOR ASSEMBLY, 13" W/CHASSIS	1
–	699 169 00	MONITOR ASSEMBLY, 13" T/S, W/INTF BD	1
8	652 099 00	MASK, MONITOR, PLASTIC	1
9	573 251 00	CHUTE, DROP, UNIVERSAL	1
10	REF*	TRAY ASSEMBLY, PROCESSOR BOARD	1
11	647 096 00*	FRAME ASSEMBLY, 120V/60 HZ., PE+	1
12	620 002 00	CONTAINER, COIN, DROP	1
13	618 004 90	CORD, POWER, STD., 7.5 FT.	1
14	619 059 01	CABLE, GROUND, 5/16 BRAID	1
15	911 488 00	KIT, BELL ASSEMBLY	1
–	220 018 90	BELL, 24V, 4-PIN, 2-PIN	1

* Refer to Lower Module for parts list of components

MACHINE ENCLOSURE

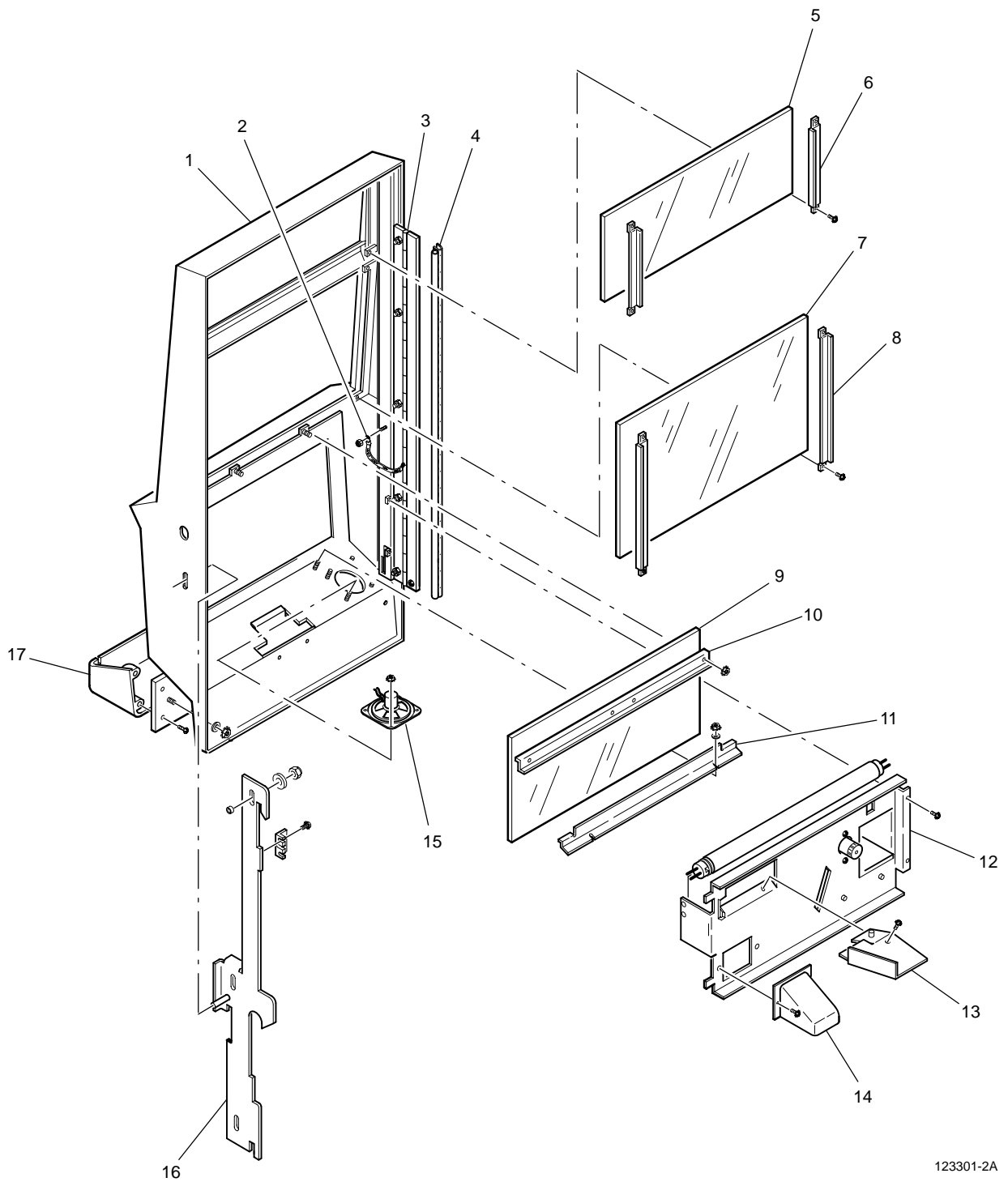


123301-1A

MACHINE DOOR

Fig. No.	Part Number	Description	Qty.
1	719 064 10	DOOR ASSEMBLY, CHROME, PE+	1
-	719 066 00	DOOR, W/STEP, UNPLATED, PE+	1
2	619 059 01	CABLE, GROUND, 5/16 BRAID, 6.0	1
3	280 037 00	HINGE, DOOR, NICKLE, PE+	1
-	424 003 95	NUT, KEP, STEEL, 6-32	5
-	419 510 94	SCREW, SEMS, PH PAN, 6-32 X 1/4	5
4	688 244 91	COVER, LIGHT, 25" HINGE, PE+	1
5	REF	GLASS, UPPER	1
6	442 067 00	CLAMP, GLASS	2
-	419 019 91	SCREW, SEMS, PH PAN, M4 X 8	4
7	REF	GLASS, VIDEO	1
8	442 067 01	CLAMP, VIDEO GLASS	2
-	419 510 96	SCREW, SEMS, PH PAN, 6-32 X 3/8	4
9	REF	GLASS, BELLY	1
10	442 105 00	CLAMP, BELLY GLASS, TOP, PE+	1
-	424 003 95	NUT, KEP, STEEL, 6-32	2
11	442 120 00	CLAMP, BELLY GLASS, BOTTOM, PE+	1
-	424 003 95	NUT, KEP, STEEL, 6-32	2
-	430 003 95	WASHER, FLAT, STEEL, #6, TYPE B/N	2
12	655 903 00	PANEL, ASSEMBLY, 50MM, LOWER, 60 HZ, PE+	1
-	194 013 90	LAMP, 15 IN. FLO, A4W, F14T8/CW	1
-	195 052 90	BALLAST, F14T8/12, 60 HZ	1
-	430 003 95	WASHER, FLAT, STEEL 36, TYPE B/N	2
-	419 510 94	SCREW, SEMS, PH PAN, 6-32 X 1/4	2
-	197 001 90	STARTER, FS-2 14, 15, 20 W	1
13	573 263 00	CHUTE, COIN-IN	1
-	419 019 91	SCREW, SEMS, PH PAN, M4 X 8	1
14	581 211 00	GUIDE, COIN DROP, 50 MM PE+	1
-	419 019 91	SCREW, SEMS, PH PAN, M4 X 8	2
15	130 014 90	SPEAKER, 8 OHM, 1W, 2IN SQ	1
-	688 257 00	COVER, SPEAKER, 13001490, 2IN SQ	1
-	424 001 95	NUT, KEP, STEEL, 4-40	4
16	639 076 00	BAR, LOCKING, PE+, UNIV.	1
-	674 175 00	SPACER, ST RD, .190ID X .250OD X .125	3
-	439 024 90	WASHER, FENDER, .205 X .75 X .62 THK	3
-	421 009 91	NUT, LOCK, ESNA, THIN, 10-32	3
-	575 030 00	ENCODER, DOOR OPEN EMITTER	1
-	653 099 00	MOUNT, DOOR OPEN OPTICS	1
KIT	911 224 00	KIT, COIN TRAY, PE+	1
17	597 114 01	COIN TRAY, BRUSHED	1
-	655 781 00	PANEL, COIN TRAY, MOUNTING	1
-	421 006 98	NUT, LOCK, ESNA, 8-32	4
-	430 006 98	WASHER, FLAT, STEEL, #8	2
-	411 107 93	SCREW, MACHINE, PH F, 8-32 X 1/2	4

MACHINE DOOR

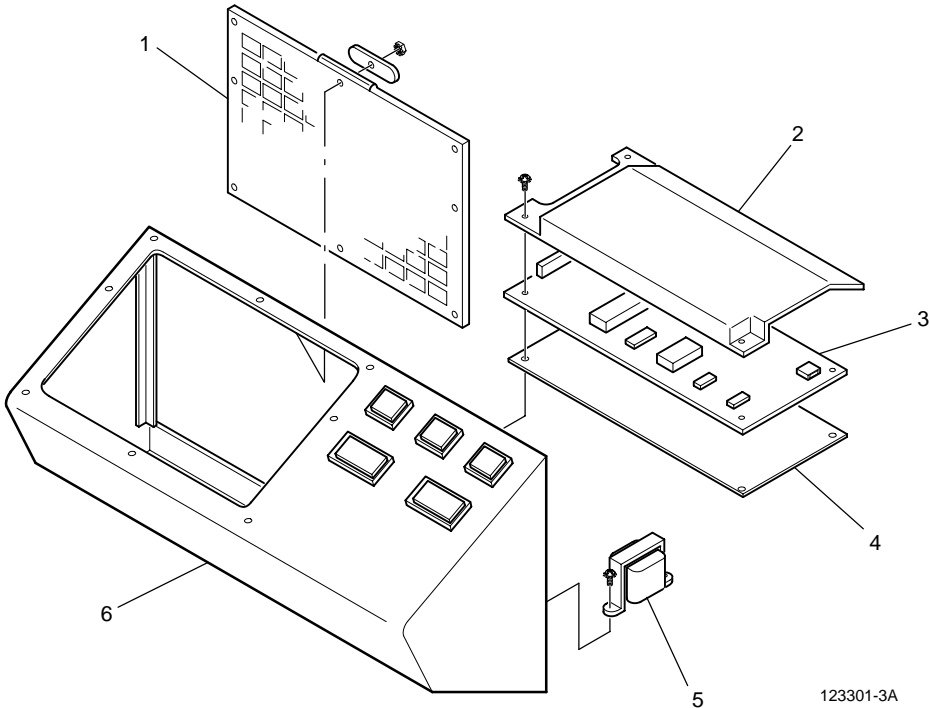


123301-2A

TOUCH PANEL

Fig. No.	Part Number	Description	Qty.
ASSY	519 052 00	ASSEMBLY, SWITCH, KEYBOARD, KENO, BLUE	1
1	519 046 00	SWITCH, KEYBOARD, KENO, BLUE	1
2	688 294 00	COVER, INTERFACE BOARD, KENO	1
-	419 510 95	SCREW, SEMS, PH. PAN, 6-32 X 5/16	3
-	625 066 00	GASKET, PANEL, KENO	1
-	442 123 00	CLAMP, PANEL, KENO	2
-	424 008 99	NUT, KEP, STEEL, 10-32	6
-	625 065 00	GASKET, KEYBOARD, SWITCH, KENO	1
-	589 493 00	PLATE, GROUNDING, SWITCH	1
-	424 003 95	NUT, KEP, STEEL, 6-32	8
3	754 174 XX	BOARD, PC, INTERFACE, KENO, MBR., SW., ASSY	1
-	419 510 95	SCREW, SEMS, PH. PAN, 6-32 X 5/16	1
4	310 041 00	INSULATOR, KENO, INTERFACE PC BOARD	1
ASSY	569 132 00	ASSEMBLY, TRANSFORMER, TOUCH PANEL, KENO	1
5	560 044 92	TRANSFORMER, 115V/10V, 200MA, CSA	1
-	600 215 00	HARNESS, PLAYER SWITCH, TOUCH PANEL, KENO	1
-	600 174 00	HARNESS, JUMPER, INTERFACE, KENO	1
-	609 707 00	HARNESS, GROUNDING PLAYER SWITCH, KENO	1
6	915 700 00	KIT, SWITCH, TOUCH PAD, KENO, PE+	1
-	685 083 00	ASSEMBLY, PANEL, TOUCH PAD, KENO, PE+	1
-	655 873 00	PANEL, KENO, TOUCH PAD, CHROME	1

TOUCH PANEL

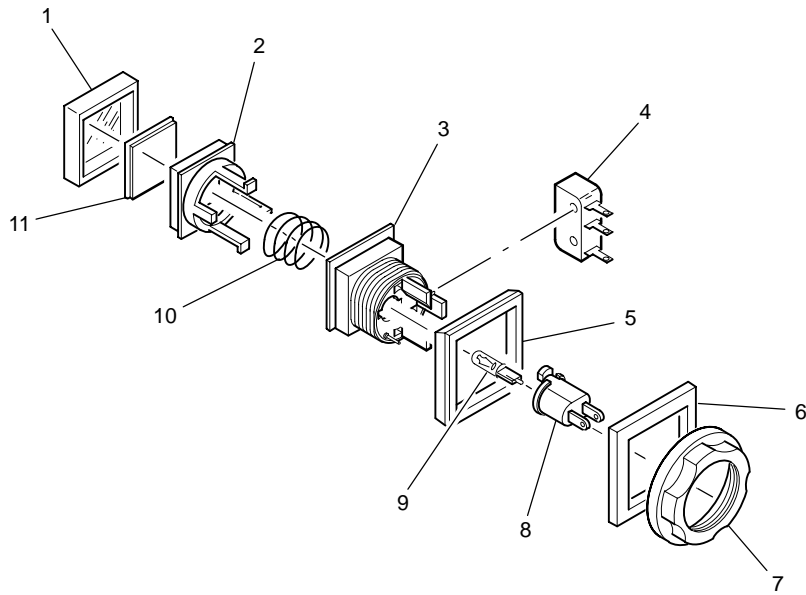


123301-3A

PLAYER PANEL SWITCH

Fig. No.	Part Number	Description	Qty.
ASSY	518 184 00	SWITCH ASSEMBLY, SQUARE	1
ASSY	518 185 00	SWITCH ASSEMBLY, RECTANGULAR	1
1	517 158 00	CAP, CLEAR, SQUARE	1
1	517 157 00	CAP, CLEAR, RECTANGULAR	1
1	517 159 00	CAP, RED, SQUARE	1
1	517 160 00	CAP, IGT, RED SQUARE, 'CHANGE'	1
1	517 160 01	CAP, IGT, RED SQUARE, 'SERVICE'	1
2	658 054 00	PLUNGER, SWITCH, SQUARE, MOD 2	1
2	658 055 00	PLUNGER, SWITCH, RECTANGLE, MOD 2	1
3	516 064 00	SWITCH, BODY, SQUARE, W/GND, MOD 2	1
3	516 063 00	SWITCH, BODY, RECTANGULAR, W/GND, MOD 2	1
4	510 108 90	SWITCH, SNAP-SUBM, PIN PLUNGER	1
5	652 051 00	BEZEL, BEAUTY, SWITCH, SQUARE, IGT	1
5	652 064 00	BEZEL, BEAUTY, SWITCH, RECTANGULAR, TALL, IGT	1
6	674 114 00	SPACER, SQUARE SWITCH, IGT	1
6	674 113 00	SPACER, RECTANGULAR SWITCH, IGT	1
7	661 038 00	RETAINER, SWITCH, IGT	1
8	120 027 90	SOCKET, LAMP, MINI, WEDGE, T1 3/4	1
8	120 044 90	SOCKET, LAMP, SHORT, WEDGE, T1 3/4	1
9	193 023 90	LAMP, T1 3/4, 6.3V WEDGE, #86	1
10	331 035 00	SPRING, COMP, .610 X .425 X .029	1
11	515 157 XX	PLATE, LEGEND, SQUARE	1
11	515 158 XX	PLATE, LEGEND, RECTANGULAR	1

PLAYER PANEL SWITCH

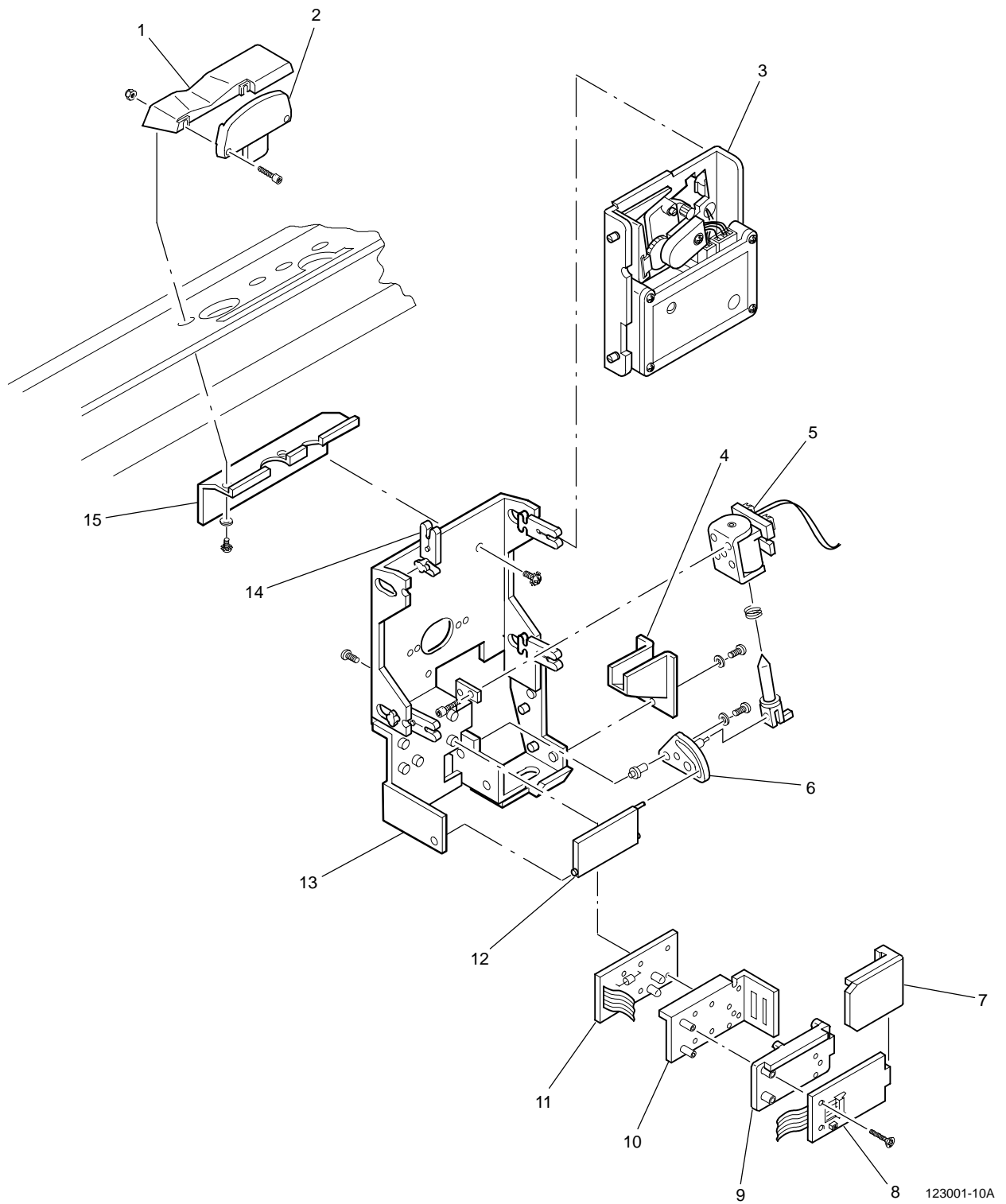


123001-9A

COIN-IN HANDLING – SMALL DENOMINATION

Fig. No.	Part Number	Description	Qty.
KIT	911 444 06	KIT, DENOM, VERS 06, 5 CT, PE+	1
KIT	911 444 12	KIT, DENOM, VERS 12, 25 CT, PE+	1
KIT	911 444 27	KIT, DENOM, VERS 27, 50 CT, PE+	1
ASSY	599 237 06	ENTRY ASSEMBLY, CHROME, .870 X .095 (5 CT)	1
ASSY	599 237 12	ENTRY ASSEMBLY, CHROME, .990 X .095 (25 CT)	1
ASSY	599 237 27	ENTRY ASSEMBLY, CHROME, 1.230 X .135 (50 CT)	1
1	633 049 01	BASE, SMALL, W/O REJ, CHROME	1
2	599 234 06	ENTRY HEAD, CHROME, .870 X .095 (5 CT)	1
2	599 234 12	ENTRY HEAD, CHROME, .990 X .095 (25 CT)	1
2	599 234 27	ENTRY HEAD, CHROME, 1.230 X .135 (50 CT)	1
-	414 600 92	SCREW, CAP HEX SOCKET, , 3-48 X 3/8	2
-	421 015 90	NUT, LOCK, ESNA 3-48	2
3	570 189 90	ACCEPTOR, COIN CC16D, 3 PIN, RFS W/L-B	1
-	600 102 01	HARNESS, COIN HANDLING, COIN COMP, P/E	1
4	573 260 00	CHUTE, REJECT, UNIVERSAL COIN	1
-	411 003 97	SCREW, MACHINE, PH PAN, 6-32 X 1/4	2
-	430 003 95	WASHER, FLAT, STEEL, #6, TYPE B/N	2
5	450 036 00	SOLENOID ASSEMBLY, 24VDC, CNT, W/DVDT	1
-	331 060 00	SPRING, COMPRESSION, DC COIN SYSTEM	1
-	414 603 96	SCREW, CAP, HEX SOC., 6-32 X 3/16	3
6	659 123 00	CAM, DIVERTER, DC COIN HANDLING SYSTEM	1
-	312 056 00	STANDOFF, CAM, DC COIN SYSTEM	1
-	411 002 91	SCREW, MACHINE, PH PAN, 4-40 X 5/8	1
-	439 058 00	WASHER, FLAT, DC DIVERTER, CAM	1
7	688 516 00	COVER, OPTIC BOARD	1
ASSY	753 066 00	PCB, ABC OPTIC, EMT/DEC ASSEMBLY	1
8	753 064 00	PCB, ABC OPTIC, DE/XL, REC ASSEMBLY	1
-	619 054 90	CABLE, FLEXSTRIP, 4 CONNECTOR, 1 IN	1
9	584 054 02	INSERT, .816-.898 DIAMETER, (5 CT)	1
9	584 054 11	INSERT, .899-1.055 (25CT/SBA), V2	1
9	584 054 05	INSERT, 1.176-1.335 IN DIAMETER, (50 CT)	1
-	411 101 99	SCREW, MACHINE, PH F, 4-40 X 5/8	2
10	649 126 00	HOUSING, ENCODER, UNIVERSAL COIN	1
11	753 065 00	PCB, ABC OPTIC, EN-LG, XMT ASSEMBLY	1
-	417 001 99	SCREW, TAP, AB, PH PAN, #4 X 1/2	3
12	576 036 00	DIVERTER, UNIVERSAL COIN SYSTEM, UPRT	1
ASSY	143 084 00	CHASSIS, ASSEMBLY, DC, COIN-IN	1
13	143 097 00	CHASSIS, ACC/DIV, UNIVERSAL, DC SOL	1
-	419 510 94	SCREW, SEMS, PH PAN, 6-32 X 1/4	3
14	446 032 00	CLIP, ACCEPTOR, UNIVERSAL, COIN SYSTEM	4
15	653 242 00	MOUNT, CHASSIS, SHORT	1
-	431 003 95	WASHER, LOCK, INT, STEEL, #6	2
-	411 004 93	SCREW, MACHINE, PH PAN, 6-32 X 3/4	2

COIN-IN HANDLING – SMALL DENOMINATION

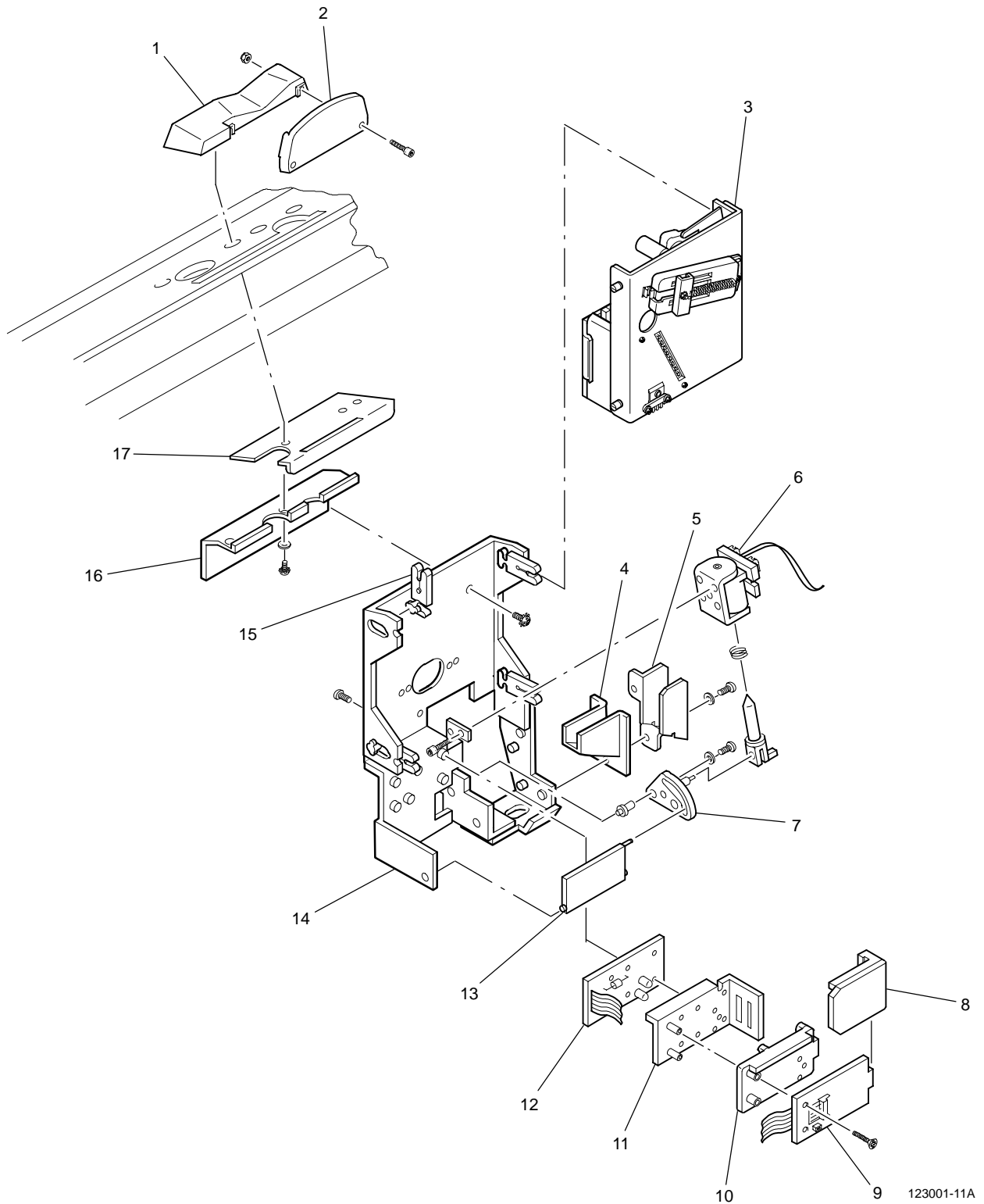


123001-10A

COIN-IN HANDLING – LARGE DENOMINATION

Fig. No.	Part Number	Description	Qty.
KIT	911 444 33	KIT, DENOM, VERS 33, IKE, PE+	1
ASSY	599 237 33	ENTRY ASSEMBLY, CHROME, 1.530 X .142	1
1	633 048 01	BASE, LARGE, W/O REJ, CHROME	1
2	599 234 33	ENTRY HEAD, CHROME, 1.530 X .142	1
-	414 600 92	SCREW, CAP HEX SOCKET, , 3-48 X 3/8	2
-	421 015 90	NUT, LOCK, ESNA 3-48	2
3	570 182 90	ACCEPTOR, COIN, CC 33D, 3-PIN, W/L-BAR	1
-	600 102 01	HARNESS, COIN HANDLING, COIN COMP, P/E	1
4	573 260 00	CHUTE, REJECT, UNIVERSAL COIN	1
5	581 293 00	GUIDE, COIN REJECT	1
-	430 003 95	WASHER, FLAT, STEEL, #6, TYPE B/N	2
-	411 003 99	SCREW, MACH, PH PAN, 6-32 X 3/8	2
6	450 036 00	SOLENOID ASSEMBLY, 24VDC, CNT, W/DVDT	1
-	331 060 00	SPRING, COMPRESSION, DC COIN SYSTEM	1
-	414 603 96	SCREW, CAP, HEX SOC, .6-32 X 3/16	3
7	659 123 00	CAM, DIVERTER, DC COIN HANDLING SYSTEM	1
-	312 056 00	STANDOFF, CAM, DC COIN SYSTEM	1
-	439 058 00	WASHER, FLAT, DC DIVERTER CAM	1
-	411 002 91	SCREW, MACHINE, PH PAN, 4-40 X 5/8	1
8	688 516 00	COVER, OPTIC BOARD	1
ASSY	753 066 00	PCB, ABC OPTIC, EMT/DEC ASSEMBLY	1
9	753 064 00	PCB, ABC OPTIC, DE/XL REC ASSEMBLY	1
-	619 054 90	CABLE, FLEXSTRIP, 4 CONNECTOR, 1 IN	1
10	584 054 07	INSERT, 1.458-1.575 IN, (IKE/40MM)	1
-	411 101 99	SCREW, MACHINE, PH F, 4-40 X 5/8	2
11	649 126 00	HOUSING, ENCODER, UNIVERSAL COIN	1
12	753 065 00	PCB, ABC OPTIC, EN-LG, XMT ASSEMBLY	1
-	417 001 99	SCREW, TAP, AB, PH PAN, #4 X 1/2	3
13	576 036 00	DIVERTER, UNIVERSAL, COIN SYSTEM, UPRT	1
ASSY	143 140 00	CHASSIS, ASSEMBLY, DC, LARGE COIN-IN	1
14	143 097 00	CHASSIS, ACC/DIV, UNIVERSAL, DC SOL	1
-	419 510 94	SCREW, SEMS, PH PAN, 6-32 X 1/4	3
15	446 032 00	CLIP, ACCEPTOR, UNIVERSAL, COIN SYSTEM	4
16	653 242 00	MOUNT, CHASSIS, SHORT	1
17	581 178 00	GUIDE, COIN-IN	1
-	431 003 95	WASHER, LOCK, INT, STEEL, #6	2
-	411 004 93	SCREW, MACH, PH PAN, 6-32 X 3/4	2

COIN-IN HANDLING – LARGE DENOMINATION

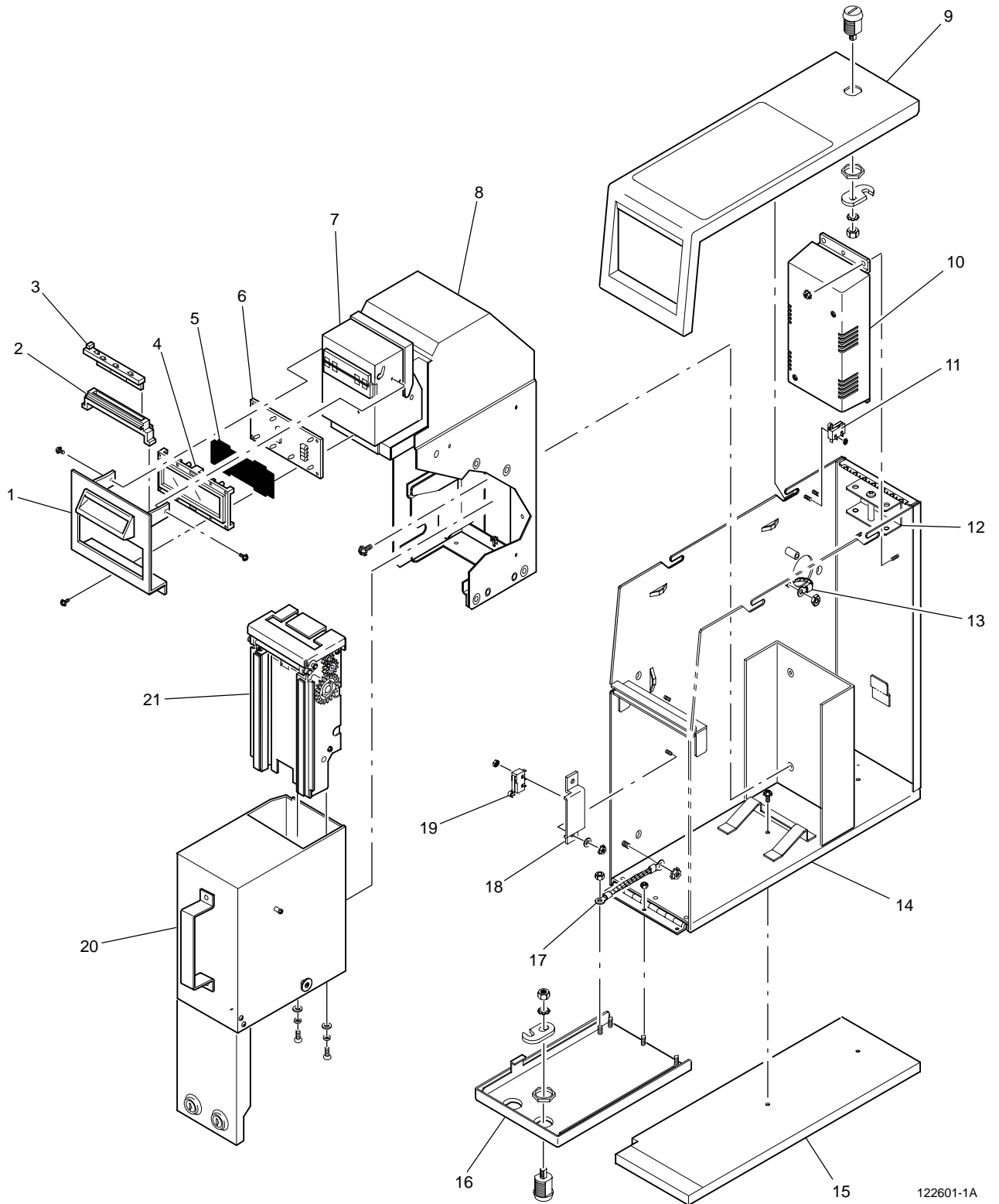


BILL ACCEPTOR

Fig. No.	Part Number	Description	Qty.
KIT	915 685 XX	KIT, BILL ACCEPTOR	1
ASSY	625 285 90	ACCEPTOR ASSEMBLY, DBV145SS, ID023, V3.00, \$1-100	1
ASSY	578 220 02	B/A ENTRY ASSEMBLY, \$1-20	1
ASSY	578 220 08	B/A ENTRY ASSEMBLY, \$1-100	1
-	447 078 90	RING, INSIDE RETAINING, .125 DIA.	4
1	652 162 00	BEZEL, LIGHTED BILL ENTRY, JCMSS	1
-	419 018 90	SCREW, SEMS, PH PAN, M3 X 6	3
2	TBD	GUIDE, B/A ENTRY	1
3	751 161 00	PCB, BILL GUIDE LIGHT	1
4	853 319 19	PLAQUE, B/A, YELLOW, INSERT BILLS, \$1-20	1
4	853 319 08	PLAQUE, B/A, YELLOW, INSERT BILLS, \$1-100	1
5	625 151 00	SHEET, VINYL, B/A PLAQUE	1
6	751 144 03	PCB ASSEMBLY, LED BACKLIGHT	1
7	625 187 90	VALIDATOR ASSEMBLY	1
8	625 216 90	TRANSPORT ASSEMBLY	1
-	411 003 99	SCREW, MACHINE, PH PAN, 6-32 X 3/8	4
9	719 113 00	DOOR, LOGIC, 1-LOCK, CHROME	1
9	719 113 01	DOOR, LOGIC, 2-LOCK, CHROME	1
-	803 056 00	CAM, BILL ACCEPTOR, UPSTACK	1-2
-	853 277 00	LEXAN, B/A, TOP GEN, \$1-20	1
-	853 289 00	LEXAN, B/A, TOP GEN, \$1-100	1
10	408 070 90	POWER SUPPLY ASSEMBLY, 15W, DBV/CBA	1
11	510 136 90	SWITCH-SNAP, MINI, ROLLER LEVER	1
-	420 000 90	NUT, HEX, STEEL, 2-56	2
-	688 536 00	COVER, SWITCH, LOGIC DOOR, S/M, B/A	1
-	674 227 00	SPACER, SWITCH, SIDE, MOUNT	1
12	674 446 00	SPACER, JCM, SS	1-2
-	431 008 99	WASHER, LOCK, INT., STEEL, #10	1-2
-	411 010 92	SCREW, MACHINE, P. PAN, 10-32 X 1-1/4	1-2
13	619 059 01	CABLE, GROUND, .5/16 BRAID, 6.0	1
-	424 008 99	NUT, KEP, STEEL, 10-32	1
14	145 619 00	ENCLOSURE, BLACK WRNKLE	1
14	145 618 00	ENCLOSURE, BLACK, WALNUT	1
14	145 618 01	ENCLOSURE, BLACK, CHROME	1
15	674 473 00	SPACER, WOOD, BOTTOM	1
-	415 118 90	SCREW, WOOD, PH PAN, #6 X 1/2	2
-	446 064 00	CLIP, DOOR, GROUND, COPPER, DBVSS	1
16	719 114 00	DOOR, DROP, 2-LOCK, B/A, CHROME	1
-	424 003 95	NUT, KEP, STEEL, 6-32	3
-	803 056 00	CAM, BILL ACCEPTOR, UPSTACK	2
-	853 278 00	LEXAN, B/A, FRONT GEN, \$1-20	1
-	853 282 00	LEXAN, B/A, FRONT GEN, \$1-100	1
17	619 059 00	CABLE, GROUND, .5/16 BRAID, 2.0	1
-	424 008 99	NUT, KEP, STEEL, 10-32	2
18	653 496 00	MOUNT, SWITCH, SIDE MOUNT, B/A	1
-	674 227 00	SPACER, SWITCH, SIDE MOUNT, B/A	1
-	424 003 95	NUT, KEP, STEEL, 6-32	2
-	430 003 95	WASHER, FLAT, STEEL, #6 TYPE B/N	2
19	510 136 90	SWITCH-SNAP, MINI, ROLLER LEVER	1
-	420 000 90	NUT, HEX, STEEL, 2-56	2
20	500 179 00	BOX, CASH W/HANDLE, B/A, DBVSS	1
-	850 377 00	LABEL, DBV/SS ACCEPTOR, BOX UP, ORN	1
21	625 191 90	STACKER ASSEMBLY	1

TBD - To be determined

BILL ACCEPTOR

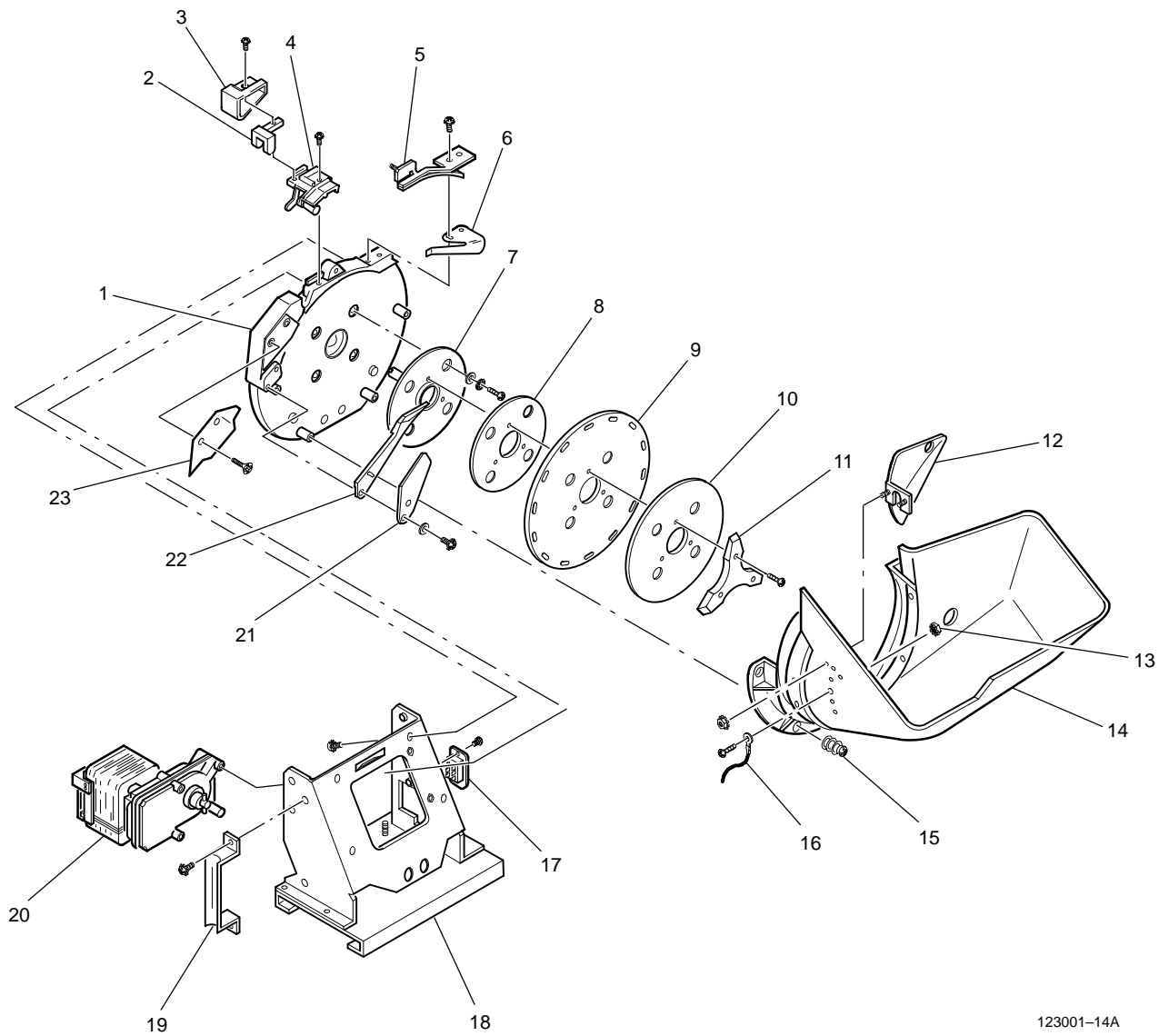


122601-1A

PINWHEEL HOPPER

Fig. No.	Part Number	Description	Qty.
ASSY	797 228 04	HOPPER, 5 CENT, PINWHEEL	1
ASSY	797 228 09	HOPPER, 25 CENT, PINWHEEL	1
1	649 069 00	HOUSING ASSEMBLY, HOPPER, WITH HUB	1
-	419 530 90	SCREW, SEMS, PH PAN, 10-32 X 3/8	4
KIT	916 413 00	KIT, HIGH SECURITY, .82-1.1, W/GUIDE	1
2	379 037 90	OPTICS ASSEMBLY, HOPPER	1
3	688 528 00	COVER, OPTIC, HIGH SECURITY, CNT ARM	1
4	631 170 00	ARM ASSEMBLY, HIGH SECURITY, .82-1.1	1
-	411 007 94	SCREW, MACHINE, PH PAN, 8-32 X 1/2	1
-	430 006 98	WASHER, FLAT, STEEL, #8, TYPE B/N	1
5	574 063 00	DEFLECTOR, SMALL COIN	1
6	681 040 00	WIPER, COIN, METAL, HOPPER	1
-	424 006 98	NUT, KEP, STEEL, 8-32	1
-	419 530 90	SCREW, SEMS, PH PAN, 10-32 X 3/8	2
KIT	917 355 00	KIT, HUB, HOPPER, BASIC	1
7	582 045 00	HUB, 4-1/4 HOPPER, BASIC	1
-	582 050 00	RING, RETAINING, HUB	1
8	284 016 00	SHIM, PINWHEEL, .010 THICK	1
9	588 039 00	PINWHEEL, 14-PIN, HORIZ	1
10	680 040 05	WHEEL, SHELF, .812-.878 X 18GA, (5CT)	1
10	575 055 08	DISC, COIN, .875-.988 X 14GA, (25CT)	1
11	572 008 00	AGITATOR, LOW PROFILE, HOPPER (25CT)	1
-	411 009 95	SCREW, MACHINE, PH PAN, 10-32 X 1/2	3
KIT	915 044 00	KIT, BOWL ASSEMBLY, HOPPER, SIDE BOWL	1
12	632 025 00	BAFFLE, HOPPER, W/BEND	1
-	424 008 99	NUT, KEP, STEEL, 10-32	2
13	424 008 99	NUT, KEP, STEEL, 10-32	1
-	411 911 90	SCREW, MACHINE, RD, BRS, 10-32 X 1 1/4	1
14	620 035 00	BOWL, HOPPER, SIDE	1
15	331 051 00	SPRING, COMP, HOPPER BOWL	2
-	331 052 00	SPRING, COMP, .058W, HOPPER BOWL	2
-	411 009 96	SCREW, MACHINE, PH P, 10-32 X 5/8	4
16	605 060 03	HARNESS, HOPPER, 7-PIN, COIN OUT OPTICS	1
-	424 006 98	NUT, KEP, STEEL, 8-32	1
-	411 010 90	SCREW, MACHINE, PH PAN, 10-32 X 1	1
-	431 008 99	WASHER, LOCK, INT, STEEL, #10	1
17	217 083 90	PLUG, 7-PIN, NAIL, MOUNTING BRACKET, GRND	1
-	413 809 94	SCREW, MACHINE, SOC, BUT, 10-32 X 1/4	2
18	647 061 00	FRAME, HOPPER	1
19	380 011 00	HANDLE, HOPPER	1
-	419 530 90	SCREW, SEMS, PH PAN, 10-32 X 3/8	2
20	350 031 90	MOTOR, HOPPER, 25 RPM, HEAVY DUTY, U.L.	1
-	411 010 94	SCREW, MACHINE, PH P, 10-32 X 1 1/2	4
-	430 008 99	WASHER, FLAT, STEEL, #10, TYPE B/N	4
-	431 008 99	WASHER, LOCK, INT, STEEL, #10	4
-	330 123 90	SPRING, BREAK ARM, HOPPER MOTOR, SPARE	1
21	581 317 00	GUIDE, COIN, KNIFE, SIDE EJECT HOPPER	1
22	585 063 00	KNIFE, HOPPER, HD PLAST, SMALL COIN	1
-	419 530 90	SCREW, SEMS, PH PAN, 10-32 X 3/8	2
-	430 008 99	WASHER, FLAT, STEEL, #10, TYPE B/N	2
23	574 036 00	DEFLECTOR, COIN, HOPPER	1
-	411 107 91	SCREW, MACHINE, PH FLAT, 8-32 X 3/8	2

PINWHEEL HOPPER



123001-14A

HOLEYWHEEL HOPPER

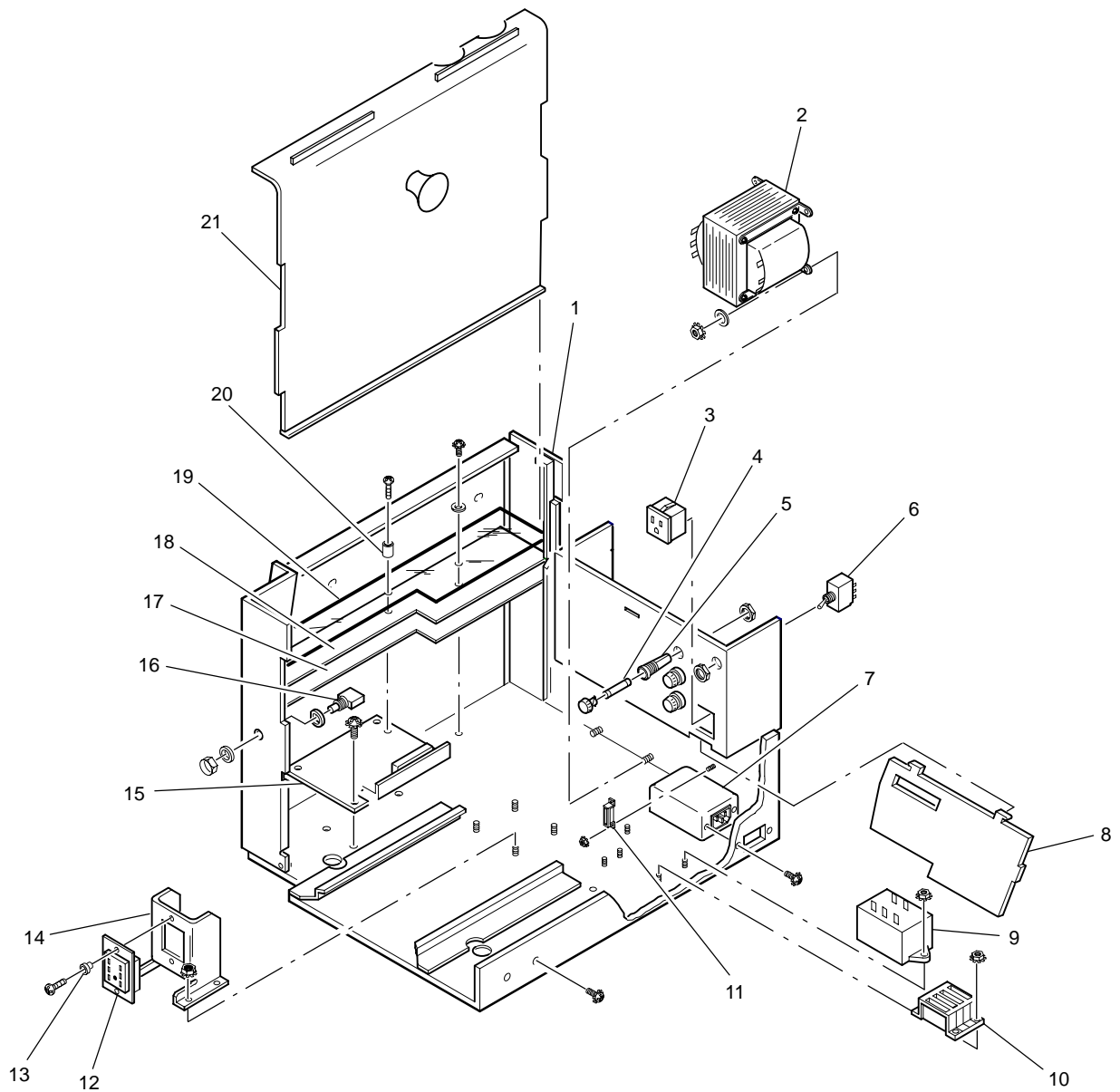
Fig. No.	Part Number	Description	Qty.
ASSY	797 210 00	HOPPER, PE+ DOLLAR, 1.469 X .107 H/W	1
1	649 122 02	HOUSING, HOPPER, H/W	1
-	419 530 91	SCREW, SEMS, PH PAN, 10-32 X 1/2	4
2	674 434 00	SPACER, HOUSING, HOLEYWHEEL HOPPER	1
-	419 530 90	SCREW, SEMS, PH PAN, 10-32 X 3/8	2
3	379 037 90	OPTICS ASSEMBLY, HOPPER	1
-	419 520 91	SCREW, SEMS, PH PAN, 8-32 X 3/8	1
KIT	917 353 00	KIT, HUB, LARGE COIN	1
4	582 046 00	HUB, HOPPER, 3.50 DIA.	1
-	582 050 00	RING, RETAINING, HUB ASSEMBLY	1
5	574 059 00	DEFLECTOR, DOLLAR, 3-GROOVE	1
-	331 035 00	SPRING, COMP, .610 X .425 X .029	2
6	581 232 00	GUIDE, COIN	1
-	331 028 90	SPRING, COMP. 30OD X .44L X .022WD	1
7	589 674 00	PLATE, BACK, DOLLAR, 3-GROOVE	1
-	419 520 90	SCREW, SEMS, PH PAN, 8-32 X 5/16	4
8	284 033 00	SHIM, PINWHEEL, 2.75 DIA X .01 THK	2
9	680 060 00	WHEEL, SHELF, DOLLAR, HOLEYWHEEL	1
10	588 056 00	PINWHEEL, DOLLAR HOLEYWHEEL HOPPER	1
-	411 009 99	SCREW, MACH, PH PAN, 10-32 X 7/8	3
11	572 022 00	LIFTER, COIN, DOLLAR HOLEYWHEEL HOPPER	2
-	411 107 93	SCREW, MACHINE, PH F, 8-32 X 1/2	2
12	680 060 00	WHEEL, SHELF, DOLLAR, HOLEYWHEEL	1
13	632 025 00	BAFFLE, HOPPER W/BEND	1
-	424 008 99	NUT, KEP, STEEL, 10-32	2
KIT	915 976 00	KIT, SIDEBOWL, HOLEYWHEEL HOPPER	1
14	620 406 00	BOWL, HOPPER, PE, HOLYWHEEL	1
-	419 530 91	SCREW, SEMS, PH PAN, 10-32 X 1/2	4
-	430 008 99	WASHER, FLAT, STEEL #10, TYPE B/N	4
15	424 008 99	NUT, KEP, STEEL, 10-32	2
-	411 911 90	SCREW, MACHINE, RD, BRS, 10-32 X 1 1/4	1
16	605 060 03	HARNESS, HOPPER, 7-PIN, COIN OUT OPTICS	1
-	411 010 90	SCREW, MACHINE, PH PAN, 10-32 X 1	1
-	424 008 99	NUT, KEP, STEEL, 10-32	1
17	585 092 00	KNIFE, S.E. DOLLAR, 3-GROOVE	1
-	411 108 94	SCREW, MACHINE, PH F, 8-32 X 1/4	2
18	217 083 90	PLUG, 7-PIN, NAIL MOUNTING BRACKET, GRND	1
-	413 809 94	SCREW, MACH, SOC, BUT, 10-32 X 1/4	2
19	647 061 00	FRAME, HOPPER	1
20	380 011 00	HANDLE, HOPPER	1
-	419 530 90	SCREW, SEMS, PH PAN, 10-32 X 3/8	2
21	350 031 90	MOTOR, HOPPER, 25 RPM, HVY DUTY, U.L.	1
-	411 010 94	SCREW, MACHINE, PH P, 10-32 X 1-1/2	4
-	431 008 99	WASHER, LOCK, INT, STEEL #10	4
-	430 008 99	WASHER, FLAT, STEEL #10, TYPE B/N	4
-	330 123 90	SPRING, BREAK ARM, HOPPER MOTOR, SPARE	1
22	585 098 00	KNIFE, HOLEYWHEEL, LEFT SIDE	1
-	419 530 90	SCREW, SEMS, PH PAN, 10-32 X 3/8	2
23	589 852 00	PLATE, SLIP, \$HW SE RADIUS CORNER	1

LOWER MODULE

Fig. No.	Part Number	Description	Qty.
ASSY	647 096 00	FRAME ASSEMBLY, 120V/60HZ PE+	1
ASSY	647 096 01	FRAME ASSEMBLY, 120V/50HZ, PE+	1
ASSY	647 096 02	FRAME ASSEMBLY, 220V/60HZ, PE+	1
ASSY	647 096 03	FRAME ASSEMBLY, 220V/50HZ, PE+	1
ASSY	647 096 04	FRAME ASSEMBLY, 240/50/60HZ, PE+	1
ASSY	647 096 06	FRAME ASSEMBLY, 120V/60HZ, W/DRP DR, PE+	1
ASSY	647 096 07	FRAME ASSEMBLY, 120V/50HZ, W/DRP DR, PE+	1
ASSY	647 096 08	FRAME ASSEMBLY, 220V/60HZ, W/DRP DR, PE+	1
ASSY	647 096 09	FRAME ASSEMBLY, 220V/50HZ, W/DRP DR, PE+	1
ASSY	647 174 00	FRAME ASSEMBLY, 120V, T/S, PE+	1
ASSY	647 174 01	FRAME ASSEMBLY, 220V, T/S, PE+	1
ASSY	647 174 02	FRAME ASSEMBLY, 120V, T/S, DROP, PE+	1
ASSY	647 174 03	FRAME ASSEMBLY, 220V, T/S, DROP, PE+	1
1	647 200 00	FRAME, LOWER MODULE, UNIVERSAL	1
2	560 027 92	TRANSFORMER, 7V, 24V, 115V, 115/220V CSA	1
-	424 001 95	NUT, KEP, STEEL, 4-40	4
3	125 010 90	OUTLET, 125VAC, .250 Q-DISC GND	1
4	524 011 90	FUSE, F.B., 5 AMP	1/2
-	524 013 90	FUSE, F.B., 6 AMP	1
-	524 009 90*	FUSE, F.B., 3 AMP	1
-	850 309 00	LABEL, LWR MOD, 120V, 50/60HZ, UL	1
-	850 309 01	LABEL, LWR MOD, 220V, 50/60HZ, UL	1
-	850 309 02	LABEL, LWR MOD, 240V, 50/60HZ, UL	1
5	213 045 90	HOLDER, FUSE, 3AG SHOCK-PROOF	3
6	511 018 90	SWITCH, TOGGLE DPST .250 FASTON	1
7	272 006 02	ASSEMBLY, FLTR, LNE, 5AMP 220/240 CSA	1
-	272 019 90	FILTER, LINE, 5AMP, IEC CON CSA	1
-	483 014 90	VARISTOR, 250V, 40J, V250LA40	1
-	609 527 00	HARNESS, GROUNDING, 16GA. X 3.50 IN.	1
-	419 510 96	SCREW, SEMS, PH PAN, 6-32 X 3/8	2
8	688 394 00	COVER, TRANSFORMER, LOWER MODULE	1
9	454 041 90	RELAY, SSR, 120/240VAC, 5 AMP	1
10	218 021 90	TERMINAL BLOCK, 10 POS COMMONING	4
-	219 562 90	HOUSING, 3-PIN, MINI-FIT	5
-	219 372 90	HOUSING, 6-PIN, MINI-FIT JR.	1
-	424 015 90	NUT, KEP, STEEL, M3	8
11	218 022 90	TERMINAL BLOCK, 5POS COMMONING	1
-	424 015 90	NUT, KEP, STEEL, M3	2
12	129 074 90	SOCKET, 7-PIN, NAIL MTG BKT	1
13	638 049 00	BUSHING, HOPPER PLUG	2
-	411 101 96	SCREW, MACH. PH F 4-40 X 1/4	2
14	626 823 00	BRACKET, HOPPER, 2 POS W/SSR MOUNTING	1
-	424 003 95	NUT, KEP, STEEL, 6-32	4
15	636 727 00	BRACKET, LOCK MODULE, PE	1
-	419 510 95	SCREW, SEMS, PH PAN, 6-32 X 5/16	4
16	516 025 90	SWITCH, P/B, MINI SPDT MOM	1
17	319 064 00	INSULATOR, VINYL/FOAM, MOTHER BD	1
18	759 036 03	PCB, MOTHERBOARD, INTL PE	1
19	688 560 00	COVER, MOTHER BOARD, UNIV, VER II	1
20	674 186 00	SPACER, ST, RD, .140 ID X .28 OD X .38 L	1
-	411 004 92	SCREW, MACH, PH PAN, 6-32 X 5/8	1
-	419 510 95	SCREW, SEMS, PH PAN, 6-32 X 5/16	2
-	430 003 95	WASHER, FLAT, STEEL #6, TYPE B/N	2
21	597 131 04	TRAY ASSEMBLY PROCESSOR, SUPER PE, PROG & STED	1
21	597 131 05	TRAY ASSEMBLY PROCESSOR, SUPER PE, YAMAHA, W/SND	1
21	597 131 07	TRAY ASSEMBLY PROCESSOR, SUPER PE, VER 3 PROG & STED	1
21	597 131 09	TRAY ASSEMBLY PROCESSOR	1
-	757 034 02	BOARD, PROCESSOR, SUPER PE, NO VOLUME	1
-	757 034 03	BOARD, PROCESSOR, SUPER PE, YAMAHA, NO VOLUME	1
-	757 034 05	BOARD, PROCESSOR, SUPER PE, YAMAHA, VER 2	1
-	757 034 07	BOARD, PROCESSOR, SUPER PE, VER 3	1
-	757 034 08	BOARD, PROCESSOR, SUPER PE+, LCST, VER 3	1
-	310 027 00	INSULATOR, PROCESSOR BOARD	1
-	911 826 00	KIT, LOCK, PROCESSOR TRAY, PE+	1

* 220/240 volt applications only.

LOWER MODULE

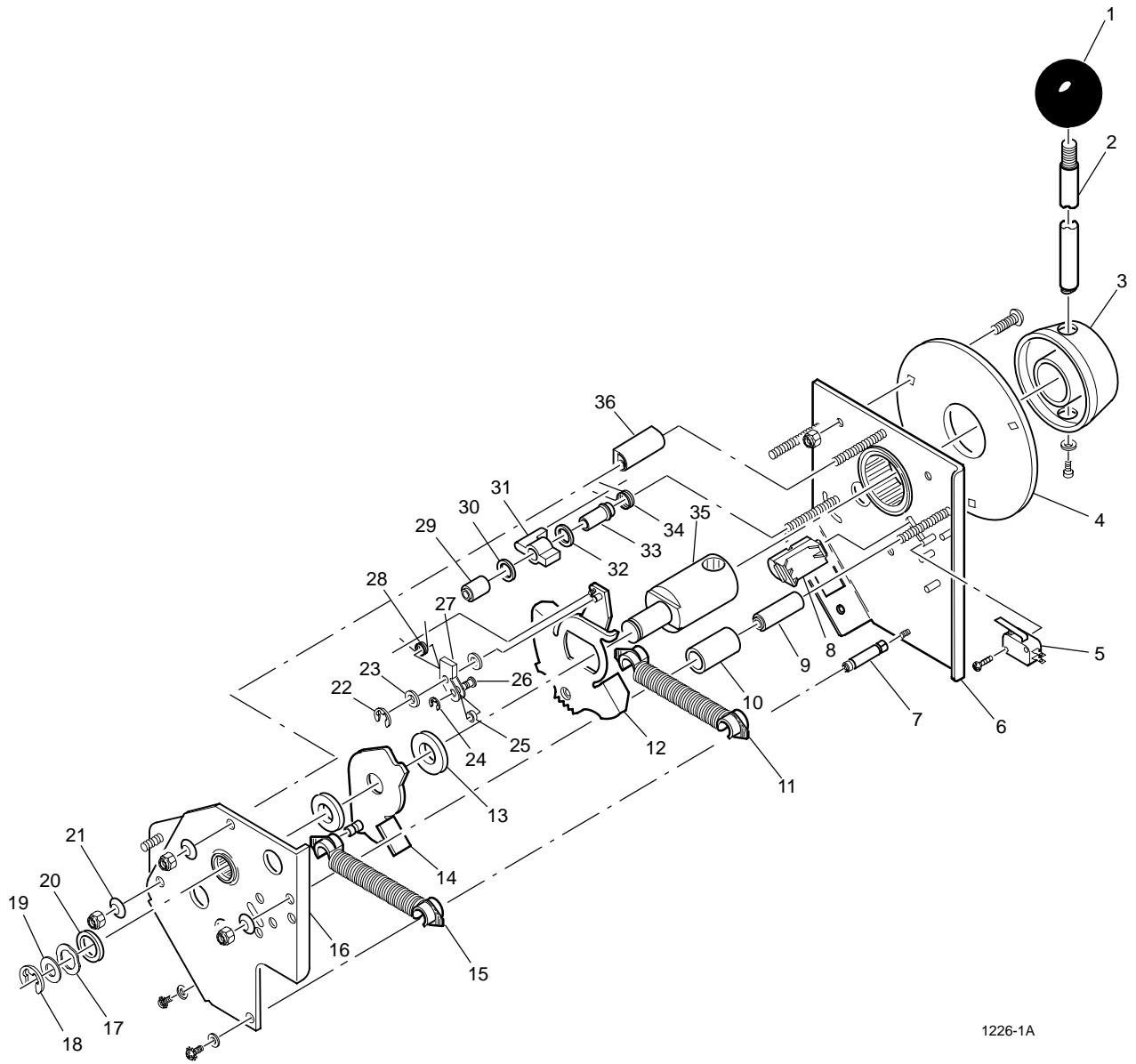


123301-5A

SLOT HANDLE MECHANISM

Fig. No.	Part Number	Description	Qty.
ASSY	388 033 01	HANDLE ASSEMBLY, 1 SW W/O LOCKOUT	1
1	383 005 90	KNOB, SLOT HANDLE, 1 7/8 IN DIA	1
2	631 113 00	ARM, HANDLE MODULE, CRM	1
-	430 022 90	WASHER, ST, .281ID X .625OD X .125	1
-	414 611 95	SCREW, CAP, HEX SOC, 1/4-20 X 5/8	1
3	582 023 00	HUB, SHAFT COVER, CHROME	1
4	661 081 00	RETAINER, RING, SLOT HANDLE, CRM	1
-	412 903 90	BOLT, CARRIAGE, 1/4-20 X 5/8, NI PL	3
-	421 011 91	NUT, LOCK, ESNA, THIN, 1/4-20	3
5	510 030 90	SWITCH, SNAP, MINI LEVER	1
-	411 002 92	SCREW, MACHINE, PH PAN, 4-40 X 3/4	2
6	589 234 00	PLATE, BOTTOM, HANDLE MODULE, 1 SW	1
7	674 171 00	SPACER, ST, RD, .312OD X 1.56L	1
8	637 020 00	BUMPER, HANDLE STOP	1
9	674 170 00	SPACER, ST, RD, .265ID X .50OD X 1.56	1
10	665 022 00	ROLLER, .62ID X .75OD X 1.45L	1
11	330 114 00	SPRING ASSEMBLY, HANDLE, .062W, FELT	1
12	589 608 00	PLATE, RATCHET, RS, HANDLE MODULE	1
13	439 040 90	WASHER, BRZ, .25ID X .50OD X .031TH	2
14	589 328 00	PLATE, HAMMER, HANDLE MODULE	1
15	330 113 00	SPRING ASSEMBLY, HANDLE, .058W, FELT	1
16	589 325 00	PLATE, TOP, HANDLE MODULE	1
-	421 011 91	NUT, LOCK, ESNA, THIN, 1/4-20	3
-	419 510 96	SCREW, SEMS, PH PAN, 6-32 X 3/8	2
-	430 003 95	WASHER, FLAT, STEEL, #6, TYPE B/N	2
-	419 520 93	SCREW, 8-32 X 1/4, SEMS	1
-	430 006 98	WASHER, FLAT, STEEL, #8, TYPE B/N	1
17	436 007 90	WASHER, WAVE, .691ID X 1.00D X .010T	1
18	447 037 90	RING, E, 133-.620 SHAFT	1
19	430 021 90	WASHER, SS, .63ID X .86OD X .016	1
20	439 044 90	WASHER, BRZ, .63ID X 1-00OD X .062TH	1
21	434 007 90	WASHER, SPRING, .256ID X .694OD	3
22	447 040 90	RING, E, 133-.250 SHAFT	1
23	439 046 90	WASHER, BRZ, .628 X 1.25OD X .12TH	2
24	447 073 90	RING, E, .188 SHAFT	1
25	665 006 00	ROLLER, CAM	1
26	440 028 00	PIN, CAM, REDUCED STROKE HANDLE	1
27	599 467 00	CAM, HANDLE, REDUCED STROKE, VER2	1
28	332 034 00	SPRING, TORSION, .442ID X 1.12L X .038W	1
29	674 169 00	SPACER, ST, RD, .265ID X .500 X .603	1
30	439 045 90	WASHER, BRZ, .38ID X .63OD X .062TH	1
31	656 017 00	PAWL, HANDLE, RATCHET	1
32	439 045 90	WASHER, BRZ, .38ID X .63OD X .062TH	1
33	674 167 00	SPACER, ST, RD, .265ID X .500D X 1.047	1
34	332 008 00	SPRING, TORSION, CAM	1
35	667 038 00	SHAFT, HANDLE MODULE 3.698 L	1
36	637 021 00	BUMPER, RUBBER, 1.56L	1

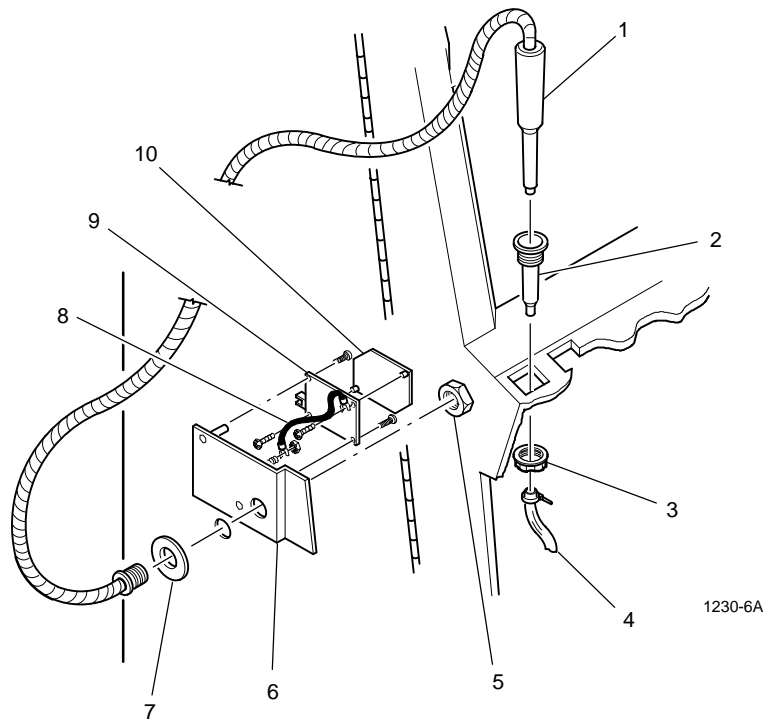
SLOT HANDLE MECHANISM



1226-1A

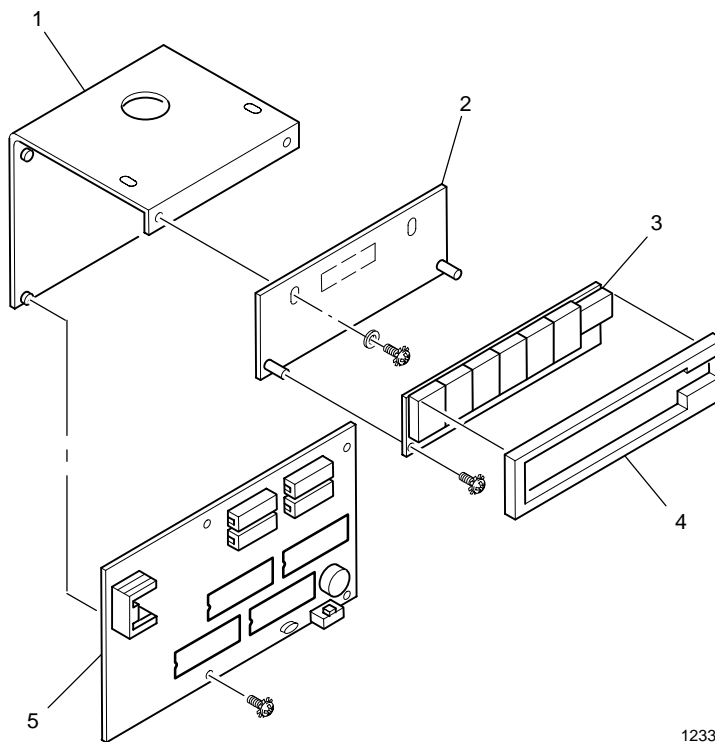
LIGHT PEN

Fig. No.	Part Number	Description	Qty.
1	199 150 00	LIGHT PEN ASSEMBLY, W/CORE	1
2	213 047 00	HOLDER, LIGHT PEN, W/O-RING	1
-	663 041 90	O-RING, .424 ID X .103 CROSECTION	1
3	661 038 00	RETAINER, SWITCH, IGT	1
4	598 021 90	TUBING, CLEAR VINYL, 1/4 ID	1
5	429 019 90	NUT, HEX, JAM, 5/8, 18 UNF-2B	1
6	636 968 00	BRACKET, LIGHT PEN DRIVER BD, PE+	1
7	589 296 00	PLATE, LIGHT PEN MOUNTING	1
8	609 810 00	HARNESS, GROUND CABLE, LIGHT PEN, RFI	1
-	424 003 95	NUT, KEP, STEEL, 6-32	1
9	753 026 00	BOARD PC, LIGHT PEN, AMP ASSEMBLY	1
-	419 510 90	SCREW, SEMS, PH PAN, 4-40 X 1/4	2
-	411 002 91	SCREW, MACH, PH PAN, 4-40 X 5/8	2
-	431 003 94	WASHER, LOCK, INT STAR #4	2
10	671 017 00	SHIELD, RFI, LIGHT PEN BOARD	1
-	609 936 00	HARNESS, LIGHT PEN, KENO, PE+	1
-	685 128 XX	PANEL, SWITCH, LIGHT PEN KENO, PE+	1



SINGLE PROGRESSIVE – TYPE A

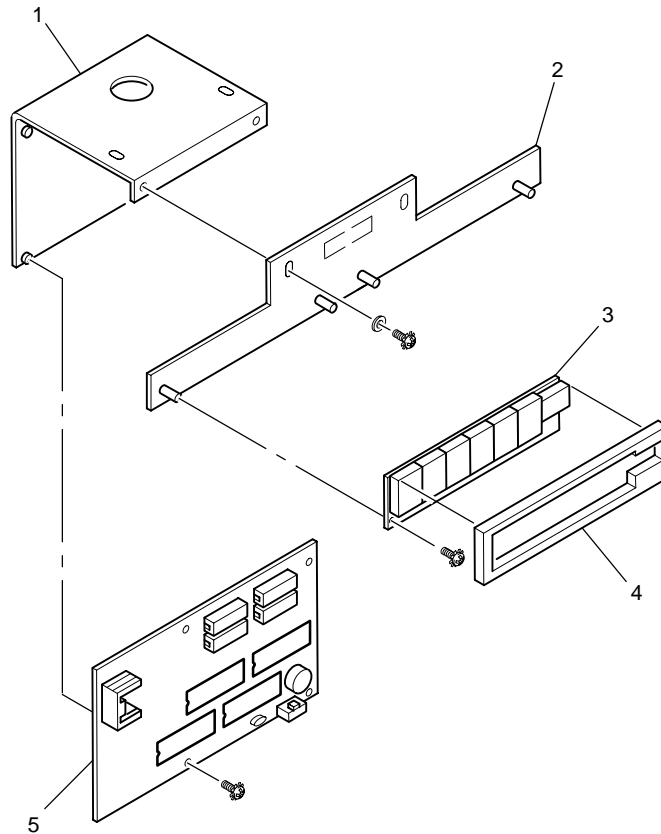
Fig. No.	Part Number	Description	Qty.
KIT	911 681 00	KIT, PROGRESSIVE, SINGLE A, 7 DIGIT	1
-	603 082 00	HARNESS, RIBBON, .1 X .1, 20 P, POL., DBL., 9	1
-	609 830 01	HARNESS, PROG., DRIVER BD, INTC, 15P	1
1	636 725 00	BRACKET, PROG., DRIVER BOARD, PE+	1
2	636 723 00	BRACKET, PROG., SINGLE, 7 DIG.	1
-	430 003 95	WASHER, FLAT, STEEL, #6, TYPE B/N	2
-	419 510 95	SCREW, SEMS, PH PAN, 6-32 X 5/16	2
3	751 072 00	BOARD, PC DISPLAY, SSLT, .80 PROG ASSEMBLY	1
-	419 510 92	SCREW, SEMS, PH PAN, 4-40 X 3/8	2
4	196 192 00	BARRIER, LIGHT, .80 DISPLAY	1
5	751 095 XX	BOARD, PC, CPU, PROG., ASSEMBLY	1
-	419 510 94	SCREW, SEMS, PH PAN, 6-32 X 1/4	4



1233-8A

DOUBLE PROGRESSIVE – TYPE A – .80” DISPLAY

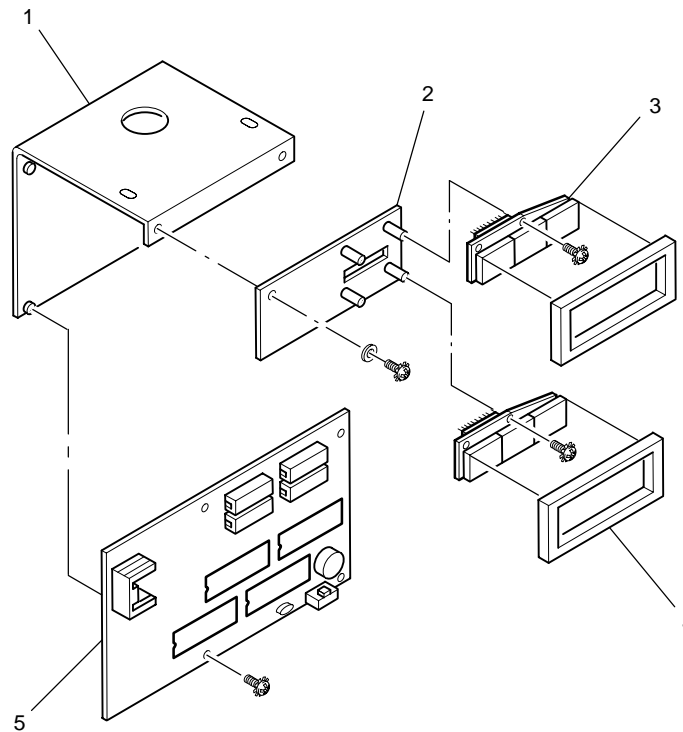
Fig. No.	Part Number	Description	Qty.
KIT	911 681 01	KIT, PROGRESSIVE, DOUBLE A, 8 DIGIT	1
KIT	911 681 02	KIT, PROGRESSIVE, DOUBLE A, 7 DIGIT	1
-	603 082 00	HARNESS, RIBBON, .1 X .1 20 P, POL., DBL., 9	1
-	609 830 01	HARNESS, PROG., DRIVER BD, INTC, 15 P	1
1	636 725 00	BRACKET, PROG., DRIVER BOARD, PE+	1
2	636 722 00	BRACKET, PROG., DBL., 7 DIGIT	1
2	636 722 01	BRACKET, PROG., DBL., 8 DIGIT	1
-	430 003 95	WASHER, FLAT, STEEL, #6, TYPE B/N	2
-	419 510 95	SCREW, SEMS, PH PAN, 6-32 X 5/16	2
3	751 072 00	BOARD, PC DISPLAY, SSLT, .80 PROG ASSEMBLY	1
-	419 510 92	SCREW, SEMS, PH PAN, 4-40 X 3/8	2
4	196 192 00	BARRIER, LIGHT, .80 DISPLAY	1
5	751 095 XX	BOARD, PC, CPU, PROG., ASSEMBLY	1
-	419 510 94	SCREW, SEMS, PH PAN, 6-32 X 1/4	4



1233-9A

DOUBLE PROGRESSIVE – TYPE B – .56” DISPLAY

Fig. No.	Part Number	Description	Qty.
KIT	911 681 03	KIT, PROGRESSIVE, DOUBLE 5, 6 DIGIT	1
-	603 082 00	HARNESS, RIBBON, .1 X .1, 20 P, POL., DBLE., 9	1
-	609 830 01	HARNESS, PROG., DRIVER BD, INTC, 15 P	1
1	636 725 00	BRACKET, PROG., DRIVER BOARD, PE+	1
2	636 724 00	BRACKET, PROG., DOUBLE B	1
-	430 003 95	WASHER, FLAT, STEEL, #6, TYPE B/N	2
-	419 510 95	SCREW, SEMS, PH PAN, 6-32 X 5/16	2
3	751 075 00	BOARD, PC DISPLAY, SSLT, .56 PROG ASSEMBLY	2
-	419 510 92	SCREW, SEMS, PH PAN, 4-40 X 3/8	4
4	196 194 00	BARRIER, LIGHT, .56 DISPLAY	2
5	751 095 XX	BOARD, PC, CPU, PROG., ASSEMBLY	1
-	419 510 94	SCREW, SEMS, PH PAN., 6-32 X 1/4	4



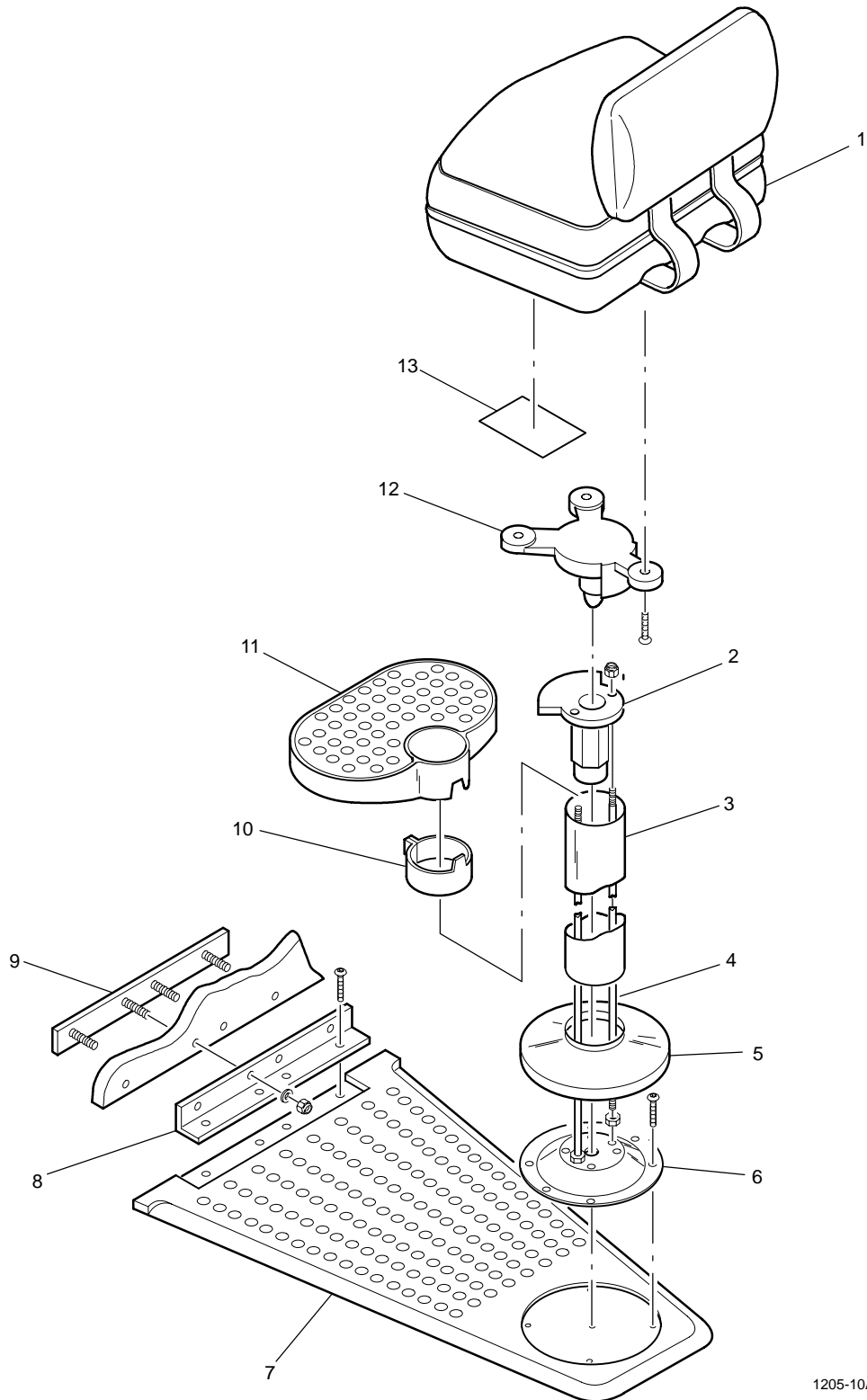
123301-4A

SEAT

Fig. No.	Part Number	Description	Qty.
KIT	915 610 00	KIT, SEAT ASSEMBLY	1
-	162 008 90	LUBRICANT	1
-	824 210 00	INSTR., SEAT INSTALLATION	1
-	830 028 00	SEAT, ASSEMBLY DRAWING	1
1	830 013 00	SEAT, SPLIT BACK (ILLUSTRATED)	1
-	830 010 00	SEAT, STRAIGHT BACK	1
-	830 026 00	SEAT, WRAP AROUND	1
2	689 012 00	CASTING, SEAT, TOP POST	1
-	421 016 90	NUT, LOCK, ESNA, THIN, 3/8-16 X .28T	2
3	598 039 00	TUBE, SEAT POST, 20 INCH, CHROME	1
3	598 039 01	TUBE, SEAT POST, 22 INCH, CHROME	1
3	598 039 02	TUBE, SEAT POST, 25 INCH, CHROME	1
3	598 039 03	TUBE, SEAT POST, 16.5 INCH, CHROME	1
4	664 026 00	ROD, THREADED, SEAT, 20 INCH	2
4	664 026 01	ROD, THREADED, SEAT, 22 INCH	2
4	664 026 02	ROD, THREADED, SEAT, 25 INCH	2
4	664 026 03	ROD, THREADED, SEAT, 16.5 INCH	2
5	688 306 00	COVER, SEAT, BASE, CHROME	1
6	589 516 00	PLATE, BASE, SEAT, POST LOCATING	1
-	413 009 90	SCREW, SOC BUT, 5/16-18 X .38L W/P	4
-	413 824 90	SCREW, SOC BUT, 5/16 X .5L, W/PATCH	4
-	431 011 91	WASHER, SPLIT LOCK, 5/16	4
-	420 014 94	NUT, HEX, STEEL, 3/8-16	2
7	589 340 00	PLATE, FLOOR, SEAT, .BRPWN, RUBBER	1
-	781 071 00	TEMPLATE, DRILL FLOOR PLATE MTG	1
-	413 009 90	SCREW, SOC BUT, 5/16-18 X .38L W/P	4
8	636 406 00	BRACKET, FLOOR PLATE MTG, BRWN	1
-	415 011 90	SCREW, SHEET METAL, 1/4 X 1, 1/4 CLEAR ZINC	4
9	589 520 00*	PLATE, REINFORCEMENT, SEAT MTG.	1
-	421 012 96	NUT, LOCK, ESNA, 5/16-18	4
-	430 009 94	WASHER, FLAT, STEEL, 5/16, TYPE B/N	4
10	442 090 00*	CLAMP, FOOTREST, POLISHED ALUMINUM	1
11	662 007 00*	FOOTREST, CASTING, LARGE, POLISHED ALUMINUM	1
12	689 011 00	CASTING, SEAT, MOUNT	1
-	430 022 90	WASHER, ST., 281ID X .625 OD X.125	3
-	419 016 90	SCREW, MACHINE, SOC CP, 1/4-20 X 1.5 WP	3
-	419 047 90	SCREW, SHC, 1/4-20 X 1.75, W/PATCH	3
13	850 296 00	LABEL, SEAT MAINTENANCE	1

*Optional

SEAT



1205-10A