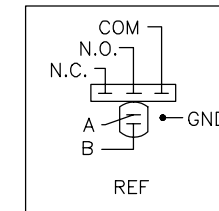
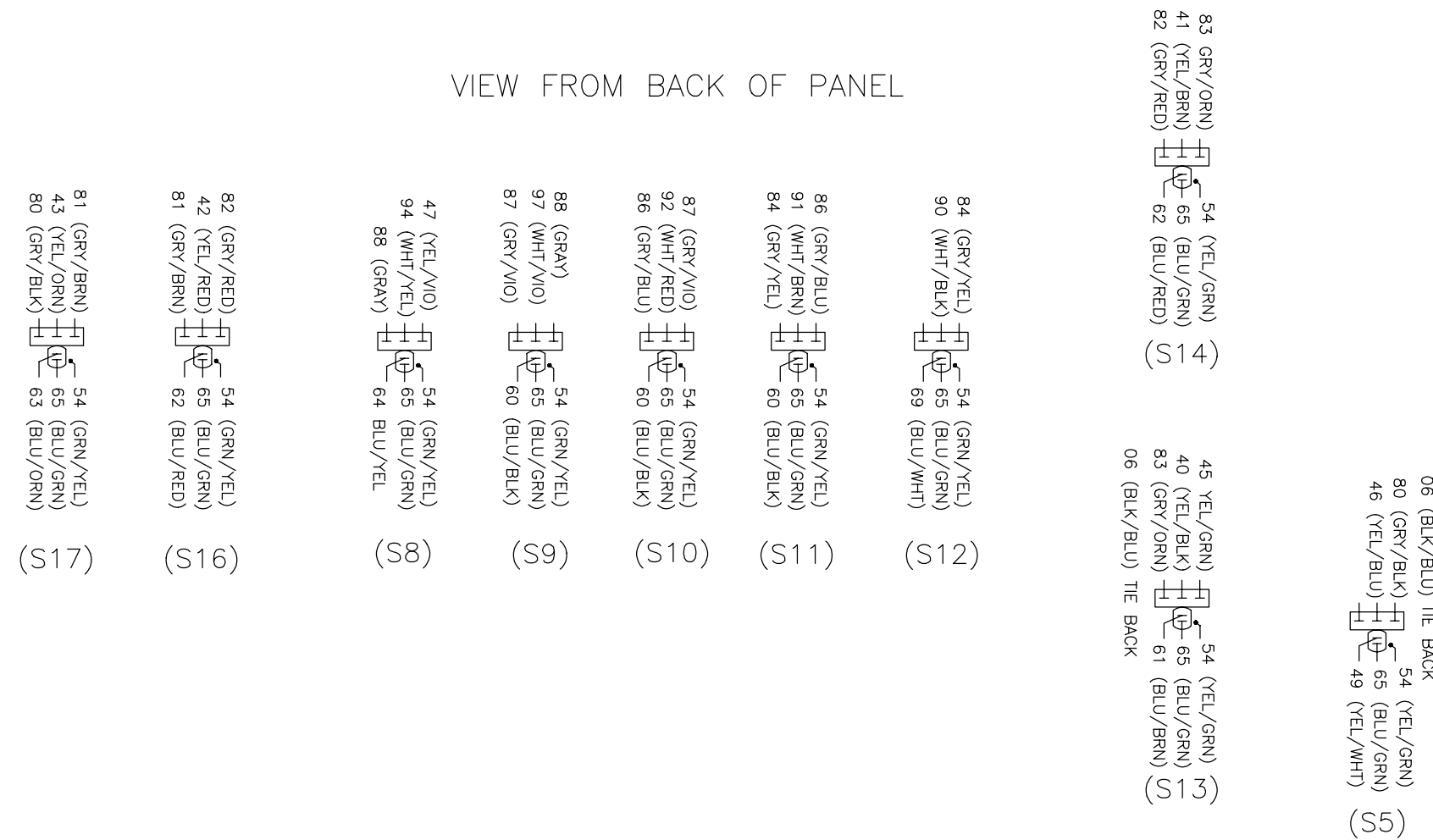


VIEW FROM BACK OF PANEL



GROUND HARNESES TO USE:
 P/N 609 692 00
 HARN, GROUNDING, PLYR. 2/SW S/T
 (TO BE USED ON SWITCHES S13 AND S14)
 P/N 609 693 00
 HARN, GROUNDING, PLYR. 3/SW S/T
 (TO BE USED ON SWITCHES S10,S11 AND S12)
 P/N 609 694 00
 HARN, GROUNDING, PLYR. 4/SW S/T
 (TO BE USED ON SWITCHES S17, S16, S8 AND S9)
 P/N 609 766 00
 HARN, GROUNDING, PLYR. 1/SW DIB
 (TO BE USED ON SWITCH S5)