



POPULAR READERS

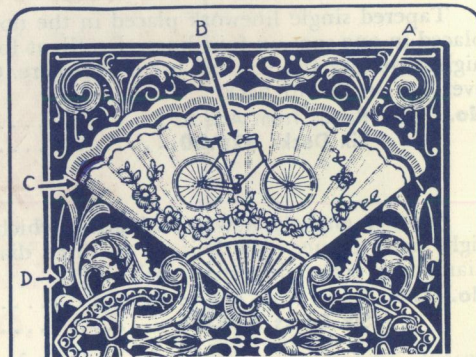
RIDER



No. 403 Rider
NEW FAN

- A—Easy to read and impossible to find. This is the best ever placed on Fan Back.
- B—Brace work in Frame. Hard to detect, yet, large and easy to play.
- C—Perfect shade work on the Fan.
- D—Work is on the hook at side of card. One of the best. Good for Skin.
- E—Blockout around inner border of Fan. Very hard to detect.
- F—Fine blockout around outer edge. One of the smartest on this back.
- G—Excellent blockout combination on the straight line near left corner.

No. 405. New Fan A-B-C-D-E-F or G
Sample Deck \$ 3.00
Six Decks 17.00
Per Dozen 33.50



No. 405 New Fan

RACER



No. 407 Racer

- A—An old reliable combination. Blockout which is very good. One of our best sellers.
- B—In the circle. Well liked and good for Stud.
- C—On extreme edge.
- D—Clever work on the dots at end of card.
- E—Fine blockout in wheel at left corner.

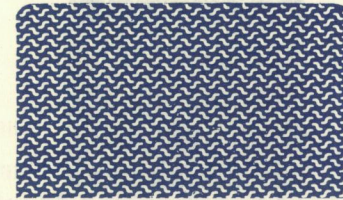
No. 407. Racer A-B-C-D or E
Sample Deck \$ 3.00
Six Decks 17.00
Per Dozen 33.50

Suit marking supplied on any of the above cards at an additional charge of 75¢ per deck. When ordering specify name and letter of combination. Example: Rider A.

A deposit of 1/2 must be sent with all orders.



FAVORITE STANDARD READERS



No. 413 Bee 35

Clever blockout. Goes over big. A to 6 only. No suit. At left corner.



No. 414 Club

- A—Fine blockout in left corner of card.
- B—Another clever blockout combination, entirely new on this back.



No. 415 Bull Dog

- A—Fine line work combination on this one.
- B—Excellent line work and the only combination that can be read from both ends on this card.



No. 420 Tally Ho

- A—Wonderful piece of line work in left corner.
- B—Clever line work in small circle. Easy to read.



No. 419 Angel Back

- A—Our famous line work. Enough said. Very fast.
- B—Well concealed line combination on shoulder.



No. 421 Circle

- A—Fast blockout work in circle.
- B—Neat blockout in left corner near border. Very fast but hard to detect.

All cards listed on this page are favorite standard brands. Supplied in red or blue back, marked for size only. Suit marking supplied at an additional charge of 75¢ per deck.

Sample Deck \$3.00 Six Decks \$17.00 Per Dozen \$33.50

A deposit of 1/2 must be sent with all orders.