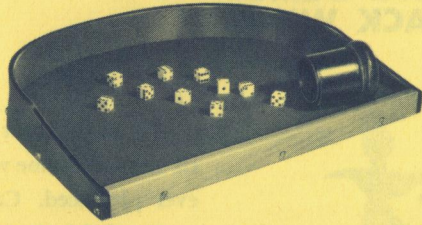




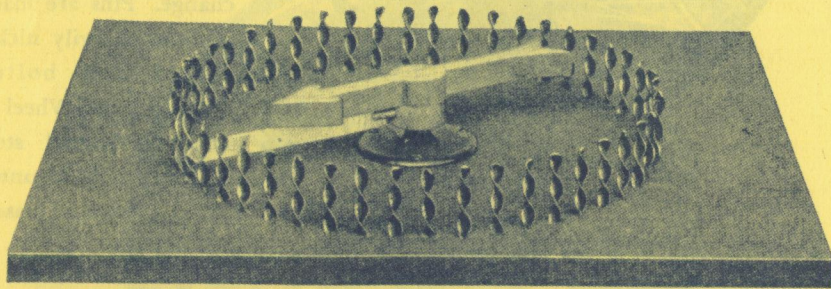
CALIFORNIA DICE MAT



This is absolutely the finest counter dice mat made and should be used with all counter dice games. Mat is 20" long 18" wide with a 3" all rubber rail in the rear and 2" in front; fully lined with best grade billiard cloth and bottom guaranteed not to warp. Dice and dice box extra.

No. P-63. California Dice Mat.....Each \$20.00

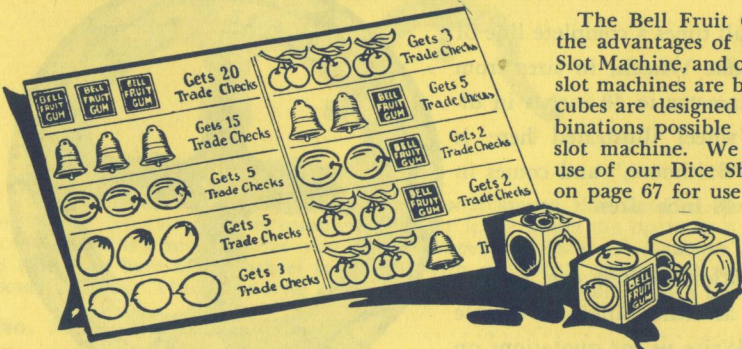
CHICAGO SET SPINDLE



This is the old reliable spindle and has met with more success in disposing of merchandise than any spindle game ever conceived. The bed of the spindle is 22 inches square, covered with green felt. The spaces are divided with twisted pins and the arrow is of hardwood with celluloid indicator. This is a two-way store, too well known to require any detailed description. Each Chicago Set Spindle is shipped with a handsome imitation leather carrying case. Complete instructions with each outfit.

No. 165. Chicago Set Spindle, complete.....Each \$165.00
No. 166. Extra Arrow.....Each 85.00

BELL FRUIT GAME



The Bell Fruit Game affords all the advantages of the popular Bell Slot Machine, and can be used where slot machines are barred. The three cubes are designed to show all combinations possible on the universal slot machine. We recommend the use of our Dice Shaker, illustrated on page 67 for use with this outfit.

No. 167. Bell Fruit Game..... \$12.50
No. R-2. Dice Shaker..... 25.00

A deposit of 1/2 must be sent with all orders.



HOW TO ORDER TRIPLE CURVE CONTACT LENSES

When ordering Contact Lenses, it is necessary for you to send us an OPHTHALMOMETER reading of your eyes, plus your regular spectacle prescription. We MUST have this reading to properly grind your lenses. If your vision is 20/20 without glasses, be sure to indicate this on your order.

An OPHTHALMOMETER is a precision instrument used to measure the curves of your eyes. A typical reading looks like this:

O.D. 42.00/43.75 X 90
O.S. 42.25/44.00 X 85

When you go to a doctor insist that he give you an OPHTHALMOMETER reading because without it, we cannot do a perfect job of fitting your lenses. Since lenses are ground exactly to the readings you send us, they are custom fitted for you alone and cannot ever be used by anyone else. Therefore, since they are prescribed for you exclusively, they ARE NOT RETURNABLE, since one else could use them.

If your doctor uses an OPHTHALMOMETER and the reading is properly made, you can be sure your lenses will be a perfect fit, as they are made by highly skilled technicians with years of experience in the manufacture of Contact Lenses.

If you cannot obtain a satisfactory reading in your city or nearby, and are able to come to Chicago, we can arrange to have your eyes measured. You will also have the opportunity to see this work. There is no obligation to buy even after your eyes are measured.

Note: Full amount must be sent with all orders for contact lenses.

CONTACT LENS SOLUTION (helps you wear contact lenses more comfortably).....Per Bottle \$ 2.00

CONTACT LENS INK

A super quality ink designed especially to be put on cards for use with Contact Lens. This new ink will not dull the gloss on cards, and will work fine on any red back card, including plastics, smooth or linen finish cards. Comes in large bottle complete with brush and instructions.

No. CL-2. Contact Lens Ink.....Each \$12.50

INK APPLICATOR

For the customer who has difficulty with a brush, we have imported this extra fine fountain pen, especially useful for applying our Contact Lens Ink. Special tip makes it easy to apply fine work and one filling will mark several decks of cards. It distributes an even flow and eliminates spoilage even on very fine designs. Anyone can do precision work with this pen in a very short time.

No. CL-3. Ink Applicator.....Each \$10.00

CONTACT LENS MATERIAL

This marking material is made in a pencil form and is fine for making your own cards for use with Contact Lens. Easy to apply, altho the work is slightly heavier than ink work. Can be put on real fast where time is important. Full instructions with order.

No. CL-4. Contact Lens Marking Material.....Each \$7.50

CONTACT LENS DAUB

NEW ... IMPROVED ...

This is a new type of daub which is very successful when used with our Contact Lens. A great improvement over old types. Full instructions with order.

No. CL-5. Contact Lens Daub.....Each \$4.00

A deposit of 1/2 must be sent with all orders.